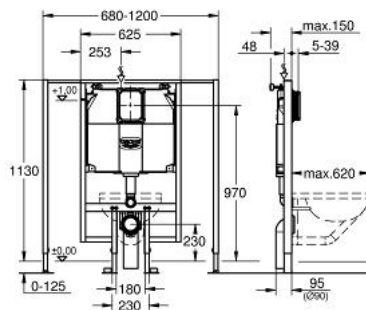


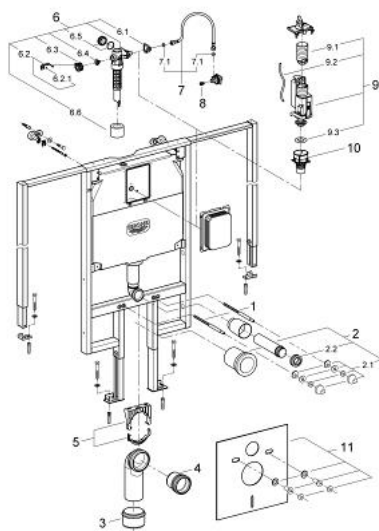
39 063 000 **RAPID SL FOR WC**



PRODUCT DESCRIPTION

- for small, narrow bathrooms
- flushing cistern 80 mm
- 1.13 m installation height
- variable element width 0.70 – 1.20 m
- for on the wall installation
- powder coated steel frame, self-supporting
- for dry-cladding, completely pre-assembled
- with fixed connections
- quick adjustment, lockable
- fixing material
- 2 WC fixing bolts
- fixing device for ceramic
- distance of fixing bolts 180/230 mm
- PP outlet bend Ø 90 mm
- reducer Ø 90/110 mm
- depth adjustable
- inlet and outlet connecting set
- flushing cistern 80 mm, 6 - 9 l, containing following features:
 - adjustment ex factory 6 l and 3 l
 - pneumatic discharge valve offering 3 modes of operation: dual flush or start/stop or single flush
- water supply from top
- low noise (group I acc. to German Noise Specification)
- water supply ½" and push fit flexible hose union
- insulated against condensation
- no tools required for the installation of the inspection shaft including protection during construction phase
- for vertical use
- set for noise protection
- accessories for on-the-wall installation
- GROHE Water Saving - Less water, perfect flow

39 063 000 **RAPID SL FOR WC**



SPARE PARTS, April 2013 – now

- 1: Threaded bolt (Spare part-nr. 4276400M)
- 2: WC inlet and outlet connecting set (Spare part-nr. 37311K00)
- 2.1: Basin fastening (Spare part-nr. 43511SH0)
- 2.2: Connector (Spare part-nr. 37119000)
- 3: Reducer (Spare part-nr. 42242000)
- 4: Distance pipe 3" (Spare part-nr. 42766000)
- 5: Support for outlet bend (Spare part-nr. 42243000)
- 6: Filling valve (Spare part-nr. 43991000)
- 6.1: Valve support (Spare part-nr. 43995000)
- 6.2: Lever (Spare part-nr. 43734000)
- 6.2.1: Seal (Spare part-nr. 4377000M)
- 6.3: Valve head (Spare part-nr. 43536000)
- 6.4: Membrane (Spare part-nr. 4375800M)
- 6.5: Screw cap (Spare part-nr. 43735000)
- 6.6: Valve float, 5 pcs. (Spare part-nr. 4379100M)
- 7: Connecting hose (Spare part-nr. 42233000)
- 7.1: Sealing washer (Spare part-nr. 0319100M)
- 8: Headpart (Spare part-nr. 42385000)
- 9: Dual Flush discharge valve AV1 (Spare part-nr. 42320000)
- 9.1: Extension for overflow pipe (Spare part-nr. 42313000)
- 9.2: Pneumatic hose (Spare part-nr. 42319000)
- 9.3: Seal (Spare part-nr. 42310000)
- 10: Valve seat for flushing cistern Italy (Spare part-nr. 42316000)
- 11: Set for noise protection (Spare part-nr. 37131000)