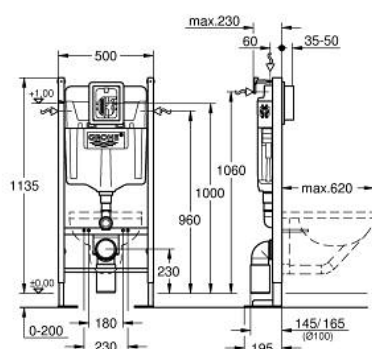


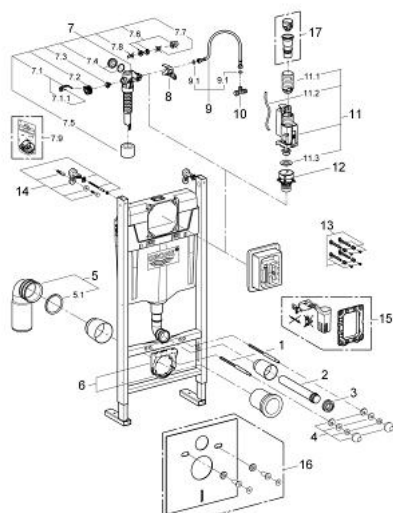
38 768 002 **RAPID SL FOR WC**



PRODUCT DESCRIPTION

- with flushing cistern GD 2, 6 - 9 l
- 1.14 m installation height
- for on-the-wall installations or studded walls
- powder coated steel frame, self-supporting
- with fixed connections
- for dry-cladding, completely pre-assembled
- lockable
- fixing material
- 2 WC fixing bolts
- fixing device for ceramic
- distance of fixing bolts 180/230 mm
- PVC outlet bend 100 mm
- spacer Ø 80 mm
- inlet and outlet connecting set
- flushing cistern GD 2, 6 - 9 l
- adjustment ex factory 6 l and 3 l
- pneumatic discharge valve offering 3 modes of operation: dual flush or start/stop or single flush
- water supply from left/right or back
- low noise (group I acc. to German Noise Specification)
- insulated against condensation
- angle valve ½"
- with push fit flexible hose union
- with protecting block
- for vertical use
- for mounting of small flush plates please order revision shaft 40 911 000 (sold separately)

38 768 002 **RAPID SL FOR WC**



SPARE PARTS, May 2009 – now

- 1: Threaded bolt (Spare part-nr. 4276400M)
- 2: Wall union (Spare part-nr. 43352000)
- 3: Connector (Spare part-nr. 37119000)
- 4: Basin fastening (Spare part-nr. 43511SH0)
- 5: PVC waste bend (Spare part-nr. 42216000)
- 5.1: Sealing washer (Spare part-nr. 4207700M)
- 6: Support for outlet bend (Spare part-nr. 42243000)
- 7: Filling valve (Spare part-nr. 37095000)
- 7.1: Lever (Spare part-nr. 43734000)
- 7.1.1: Seal (Spare part-nr. 4377000M)
- 7.2: Valve head (Spare part-nr. 43536000)
- 7.3: Membrane (Spare part-nr. 4375800M)
- 7.4: Screw cap (Spare part-nr. 43735000)
- 7.5: Valve float, 5 pcs. (Spare part-nr. 4379100M)
- 7.6: Set of seals (Spare part-nr. 43722000)*
- 8: Support device (Spare part-nr. 42246000)
- 9: Connecting hose (Spare part-nr. 42233000)
- 9.1: Sealing washer (Spare part-nr. 0319100M)
- 10: Angle valve (Spare part-nr. 43821000)
- 11: Dual Flush discharge valve AV1 (Spare part-nr. 42320000)
- 11.1: Extension for overflow pipe (Spare part-nr. 42313000)
- 11.2: Pneumatic hose (Spare part-nr. 42319000)
- 11.3: Seal (Spare part-nr. 42310000)
- 12: Valve seat for GD2 (Spare part-nr. 42315000)
- 13: Fixing set (Spare part-nr. 4215800M)
- 14: Wall brackets (Spare part-nr. 3855800M)
- 15: Retrofit set (Spare part-nr. 38796000)*
- 16: Set for noise protection (Spare part-nr. 37131000)*
- 17: 4.5 l adapter for GD2 (Spare part-nr. 42333000)*

* Optional accessories