

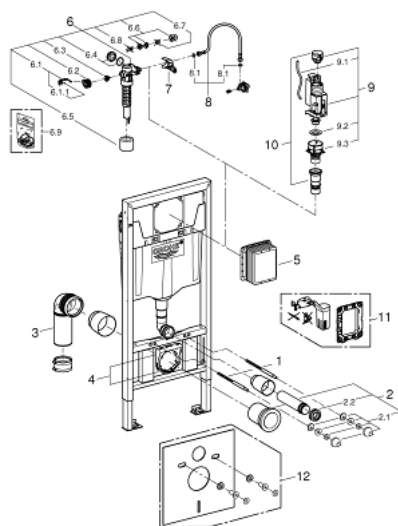
38 749 002 **RAPID SL FOR WC**



PRODUCT DESCRIPTION

- with vertical support for WC bowls with a bearing area of less than 20 cm
- with flushing cistern GD 2, 6 - 9 l
- 1.13 m installation height
- for on-the-wall installations or studed walls
- powder coated steel frame, self-supporting
- for dry-cladding, completely pre-assembled
- with fixed connections
- quick adjustment, lockable
- fixing material
- TÜV approved
- 2 WC fixing bolts
- fixing device for ceramic
- distance of fixing bolts 180/230 mm
- depth adjustable
- outlet bend Ø 90 mm
- transition Ø 90 mm
- inlet and outlet connecting set
- flushing cistern GD 2, 6 - 9 l
- adjustment ex factory 6 l and 3 l
- pneumatic discharge valve offering 3 modes of operation: dual flush or start/stop or single flush
- water supply from left/right or back
- low noise (group I acc. to German Noise Specification)
- insulated against condensation
- ½" water supply connection including integrated angle valve and push fit flexible hose union
- no tools required for the installation of the inspection shaft including protection during construction phase
- for vertical or horizontal use
- without accessories for on-the-wall installation
- for mounting of small flush plates please order revision shaft 40 911 000 (sold separately)

38 749 002 **RAPID SL FOR WC**



SPARE PARTS, November 2016 – now

- 1: Threaded bolt (Spare part-nr. 4276400M)
- 2: WC inlet and outlet connecting set (Spare part-nr. 37311K00)
- 2.1: Basin fastening (Spare part-nr. 43511SH0)
- 2.2: Connector (Spare part-nr. 37119000)
- 3: PP-outlet bend Ø 90 mm (Spare part-nr. 42327000)
- 4: Support for outlet bend (Spare part-nr. 42243000)
- 5: Inspection shaft (Spare part-nr. 66791000)
- 6: filler valve US (Spare part-nr. 42485000)
- 6.1: Lever (Spare part-nr. 43734000)
- 6.1.1: Seal (Spare part-nr. 4377000M)
- 6.2: Valve head (Spare part-nr. 43536000)
- 6.3: Membrane (Spare part-nr. 4375800M)
- 6.4: Screw cap (Spare part-nr. 43735000)
- 6.5: Valve float, 5 pcs. (Spare part-nr. 4379100M)
- 6.6: Dummy plug and escutcheon cap (Spare part-nr. 37125000)
- 6.7: Compression nut (Spare part-nr. 43258000)
- 6.8: Throttle (Spare part-nr. 42356000)
- 6.9: Set of seals (Spare part-nr. 43722000)*
- 7: Support device (Spare part-nr. 42246000)
- 8: Connecting hose (Spare part-nr. 42233000)
- 8.1: Sealing washer (Spare part-nr. 0319100M)
- 9: Dual Flush discharge valve AV1 (Spare part-nr. 66558000)
- 9.1: Pneumatic hose (Spare part-nr. 42319000)
- 9.2: Seal (Spare part-nr. 42310000)
- 9.3: Valve seat for GD2 (Spare part-nr. 42315000)
- 10: 4.5 l adapter for GD2 (Spare part-nr. 42333000)
- 11: Retrofit set (Spare part-nr. 38796000)*
- 12: Set for noise protection (Spare part-nr. 37131000)*

* Optional accessories