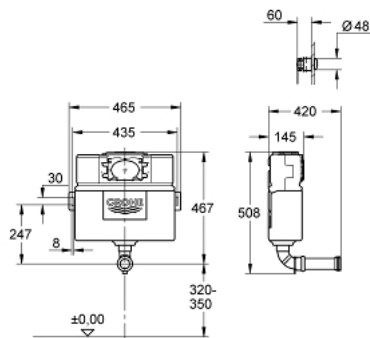


38 691 000 EAU2 WC FLUSHING CISTERN 0.82 M



PRODUCT DESCRIPTION

- 6 l / 3 l
- Dual Flush
- low noise filling valve
- 6 - 9 l adjustable
- concealed installation
- 0.82 m installation height
- water supply from left/right or back
- connection from left / right or back
- non-interruptible flush cycle
- front or top single 6 l only flush
- water supply from left/right or top
- low noise (group I acc. to German Noise Specification)
- insulated against condensation
- 415 x 410 x 360 mm
- with angle stop valve 1/2" and flush pipe
- 1/2" water supply connection
- angle valve 1/2"
- fixing brackets
- flush pipe
- without flush plate/actuation
- protecting block
- min. recommended static pressure 0.2 bar
- air button
- front or top actuation
- extended hose length for flexibility when positioning the actuation
- sleek and minimal styling allows the button to be fitted in any 360 degree orientation
- GROHE Water Saving - Less water, perfect flow

38 691 000 EAU2 WC FLUSHING CISTERN 0.82 M



SPARE PARTS, October 2021 – now

- 1: Pneumatic push button actuation (Spare part-nr. 38771000)
- 1.1: Push button and escutcheon (Spare part-nr. 42311PI0)
- 1.2: Nipple (Spare part-nr. 4227100M)
- 1.3: Tubes (Spare part-nr. 42775000)
- 2: Discharge valve AV1 complete (Spare part-nr. 42314000)
- 2.1: Pneumatic hose (Spare part-nr. 42319000)
- 2.2: Seal (Spare part-nr. 42310000)
- 2.3: Valve seat for GD2 (Spare part-nr. 42315000)
- 3: Protective plate (Spare part-nr. 42199000)
- 4: Wall union (Spare part-nr. 43352000)
- 5: Connector (Spare part-nr. 37119000)
- 6: Water connection (Spare part-nr. 48561000)
- 7: Overflow Sleeve (Spare part-nr. 43325000)
- 7.1: Sealing washer (Spare part-nr. 0319100M)
- 8: Support device (Spare part-nr. 42195000)
- 9: Filling valve (Spare part-nr. 37095000)
- 9.1: Lever (Spare part-nr. 43734000)
- 9.1.1: Seal (Spare part-nr. 4377000M)
- 9.2: Valve head (Spare part-nr. 43536000)
- 9.3: Membrane (Spare part-nr. 4375800M)
- 9.4: Screw cap (Spare part-nr. 43735000)
- 9.5: Valve float, 5 pcs. (Spare part-nr. 4379100M)
- 9.6: Set of seals (Spare part-nr. 43722000)*
- 10: Flow restrictor (Spare part-nr. 42300000)*

* Optional accessories