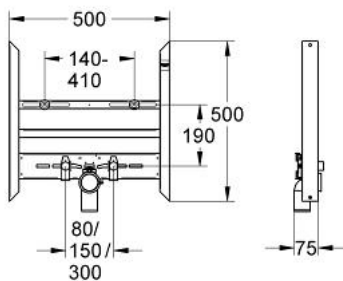


## 38 628 000 **RAPID SL FOR WASH BASIN**



### PRODUCT DESCRIPTION

- for single hole installation
- for studed walls
- powder coated steel frame
- for dry-cladding, completely pre-assembled
- with fixed connections
- for single installation
- fixing material
- wash basin fixing bolts M10 with fixing device for ceramic
- variable distance of fixing bolts
- HT-outlet bend Ø 50 mm
- seal Ø 32 mm
- 2 noise protected fitting connections ½"



## 38 628 000 **RAPID SL FOR WASH BASIN**

### **SPARE PARTS**, November 2009 – now

- 1: Fitting connection (Spare part-nr. 42944000)
- 2: Threaded bolt (Spare part-nr. 42247000)
- 3: Outlet elbow 2" (Spare part-nr. 42943000)
- 3.1: Holder for outlet elbow (Spare part-nr. 42236000)

