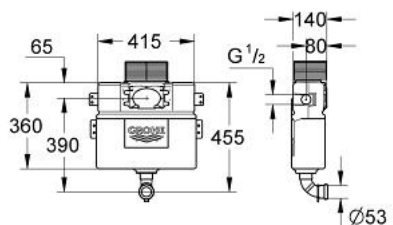


## 38 592 000 FLUSHING CISTERN FOR WC

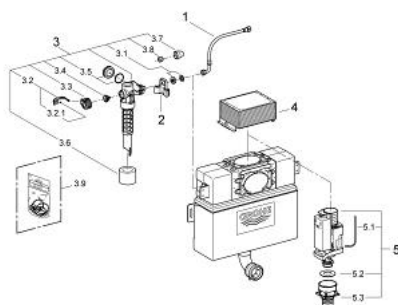


### PRODUCT DESCRIPTION

- 6 - 9 l adjustable
- concealed installation
- 0.82 m installation height
- interruptible flush cycle
- front or top actuation
- water supply from left/right or top
- low noise (group I acc. to German Noise Specification)
- insulated against condensation
- 415 x 410 x 360 mm
- flexible connecting hose Ø 3/8"
- fixing brackets
- flush pipe
- shortable inspection shaft incl. protection during construction phase
- without flush plate/actuation
- GROHE Water Saving - Less water, perfect flow



## 38 592 000 FLUSHING CISTERN FOR WC



### SPARE PARTS, August 2004 – now

- 1: Connecting hose (Spare part-nr. 42206000)
- 2: Support device (Spare part-nr. 42195000)
- 3: Filling valve (Spare part-nr. 37095000)
- 3.1: Lever (Spare part-nr. 43734000)
- 3.1.1: Seal (Spare part-nr. 4377000M)
- 3.2: Valve head (Spare part-nr. 43536000)
- 3.3: Membrane (Spare part-nr. 4375800M)
- 3.4: Screw cap (Spare part-nr. 43735000)
- 3.5: Valve float, 5 pcs. (Spare part-nr. 4379100M)
- 3.6: Set of seals (Spare part-nr. 43722000)\*
- 4: Inspection shaft for flushing cistern (Spare part-nr. 42326000)
- 5: Discharge valve AV1 complete (Spare part-nr. 42314000)
- 5.1: Pneumatic hose (Spare part-nr. 42319000)
- 5.2: Seal (Spare part-nr. 42310000)
- 5.3: Valve seat for GD2 (Spare part-nr. 42315000)
- \* Optional accessories