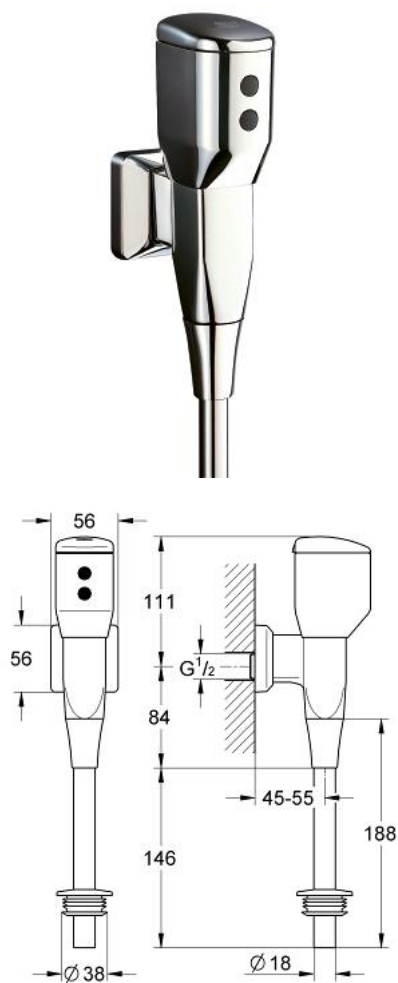


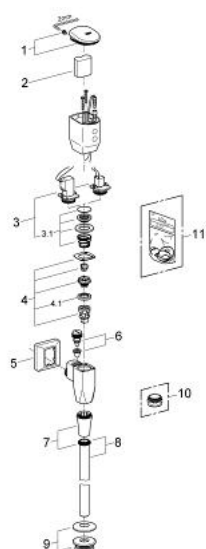
37 713 000 TECTRON INFRA-RED ELECTRONIC

PRODUCT DESCRIPTION

- Colour: chrome
- compact fitting
- for urinal
- 1/2"
- exposed installation
- 6 V DC battery supply
- CE approved
- for urinal bowls with inlet from top
- metal housing
- infra-red control with battery LED
- adjustable flow time
- 24 h flushing can be activated
- with integrated stop valve, flush pipe Ø 15 x 300 mm and rubber connector
- GROHE Water Saving - Less water, perfect flow
- GROHE Long-Life finish



37 713 000 TECTRON INFRA-RED ELECTRONIC



SPARE PARTS, September 2009 – now

- 1: Housing cover (Spare part-nr. 42881000)
- 2: Battery (Spare part-nr. 42886000)
- 3: Solenoid valve (Spare part-nr. 42893000)
- 3.1: Transformer for mirror (Spare part-nr. 43581000)
- 4: Piston (Spare part-nr. 42797000)
- 4.1: Sleeve (Spare part-nr. 4376500M)
- 5: Escutcheon (Spare part-nr. 43226000)
- 6: Supply stop (Spare part-nr. 43393000)
- 7: Nut (Spare part-nr. 43304000)
- 8: Urinal flush pipe (Spare part-nr. 37035000)
- 9: Adapter for urinal (Spare part-nr. 43818000)
- 10: Fixing nut (Spare part-nr. 43310000)*
- 11: Set of seals (Spare part-nr. 42877000)*

* Optional accessories