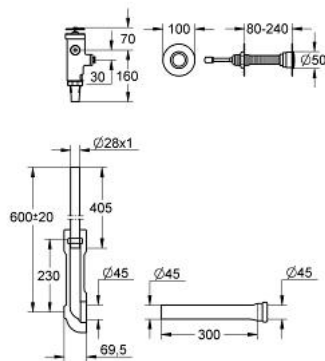


37 609 000 **FLUSH VALVE FOR WC**

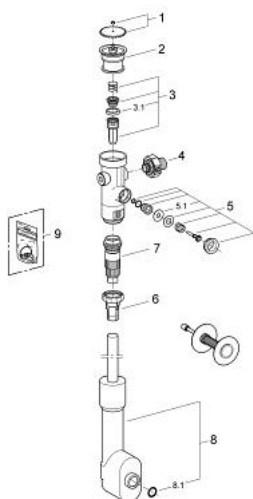


PRODUCT DESCRIPTION

- $\frac{3}{4}$ "
- for installation behind the wall, for public use
- stop valve
- push button actuation
- flow pressure range from 1.2 - 5.0 bar
- brass
- flow rate adjustment
- with actuation set suitable for wall of 80 - 240 mm thickness
- actuation stop
- flush bend
- flush pipe adjustable in length
- extension pipe to WC, 300 mm
- stop valve: additionally 43 405



37 609 000 FLUSH VALVE FOR WC



SPARE PARTS, July 2008 – now

- 1: Hand wheel (Spare part-nr. 43043000)
- 2: Cover (Spare part-nr. 43122000)
- 3: Piston (Spare part-nr. 43451000)
- 3.1: Sleeve (Spare part-nr. 4376900M)
- 4: Supply stop (Spare part-nr. 43405000)
- 5: Safety valve (Spare part-nr. 43422000)
- 5.1: Membrane (Spare part-nr. 4377300M)
- 6: Discharge sleeve (Spare part-nr. 43326000)
- 7: Throttle nozzle (Spare part-nr. 43407000)
- 8: Flush pipe (Spare part-nr. 43905000)
- 8.1: Sealing washer (Spare part-nr. 4388000M)
- 9: Set of seals (Spare part-nr. 43012000)*

* Optional accessories