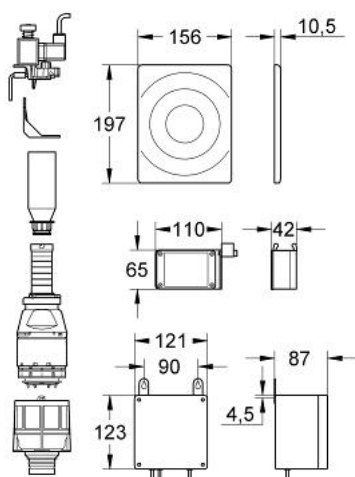


## 37 558 000 **RADIO ELECTRONIC**

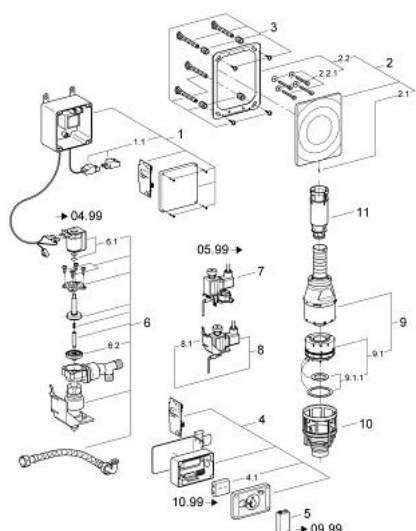


### PRODUCT DESCRIPTION

- Colour: chrome
- for WC flushing cistern, 6 l
- electric actuation
- flush plate 156 x 197 mm
- brass
- radar with foil coated transmitter
- 6 V DC battery supply
- fixing set for support rails for the disabled
- control unit for external installation
- operating voltage 230 V AC, 50 Hz, 33.5 VA
- lifting magnet
- with radio receiver
- 2 m connecting cable
- for Pressalit support rail for the disabled



## 37 558 000 **RADIO ELECTRONIC**



### **SPARE PARTS**, July 2008 – now

- 1: Electronic control unit (Spare part-nr. 42780000)
- 1.1: Transmission cable (Spare part-nr. 43677000)
- 2: Flush plate (Spare part-nr. 43553000)
- 2.1: Screw (Spare part-nr. 43094000)
- 2.2: Mounting frame (Spare part-nr. 43215000)
- 2.2.1: Fixing set (Spare part-nr. 4308500M)
- 3: Fixing set (Spare part-nr. 4215800M)
- 4: Control system (Spare part-nr. 42744000)
- 4.1: Battery (Spare part-nr. 42886000)
- 5: Battery (Spare part-nr. 43823000)
- 6: Actuation (Spare part-nr. 42802000)
- 6.1: Magnetic coil (Spare part-nr. 43632000)
- 6.2: Membrane (Spare part-nr. 43809000)
- 7: Lifting magnet (Spare part-nr. 42162000)
- 8: Lifting magnet (Spare part-nr. 42745000)
- 8.1: Traverse (Spare part-nr. 42908000)
- 9: Servo discharge valve (Spare part-nr. 42690000)
- 9.1: Outlet piston (Spare part-nr. 43544000)
- 9.1.1: Seal (Spare part-nr. 43808000)
- 10: Valve seat (Spare part-nr. 42691000)
- 11: Extension (Spare part-nr. 42689000)