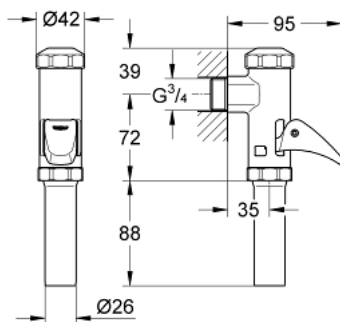


37 401 000 **START DAL-FULL-AUTOMATIC FLUSH VALVE FOR WC**

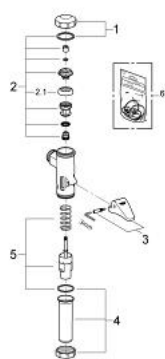


PRODUCT DESCRIPTION

- Colour: chrome
- exposed installation
- $\frac{3}{4}$ "
- flow pressure range from 1.2 - 5.0 bar
- for wash-down and wash-out bowls
- with automatic flow rate adjustment
- low noise (group II according to German noise specification)
- brass
- GROHE Long-Life finish



37 401 000 **START DAL-FULL-AUTOMATIC FLUSH VALVE FOR WC**



SPARE PARTS, May 2011 – now

- 1: Cover (Spare part-nr. 43104000)
- 2: Piston (Spare part-nr. 43447000)
- 2.1: Sleeve (Spare part-nr. 4376400M)
- 3: Lever (Spare part-nr. 43056000)
- 4: Discharge sleeve (Spare part-nr. 43318000)
- 5: Sleeve (Spare part-nr. 43453000)
- 6: Set of seals (Spare part-nr. 43707000)*

* Optional accessories