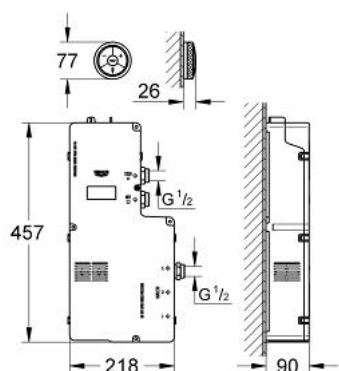


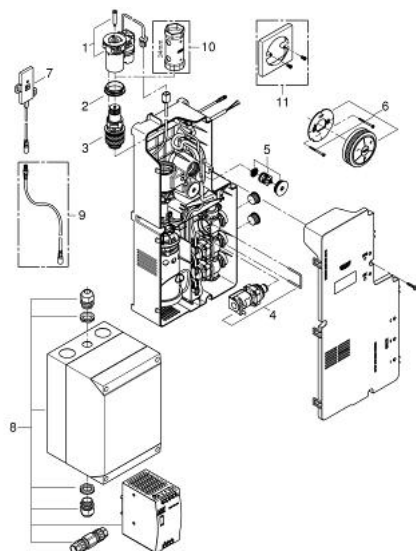
36 293 000 **DIGITAL CONTROLLER FOR BATH OR SHOWER**



PRODUCT DESCRIPTION

- Colour: chrome
- including digital thermostat unit
- Digital Controller - intuitive multifunctional operating unit
- - wireless technology
- - temperature and flow control
- - pause function
- - memory function
- - LED ring incl. warming-up function: visual feedback when preferred temperature is reached
- digital thermostat unit (concealed body)
- - warm/cold-supplies 1/2"
- - 1 outlet 1/2"
- - with pump and built-in power supply 110-240 V / operating voltage 24 V / cable length 400m
- transceiver unit for Digital Controller and digital thermostat unit incl. cable 3 m
- GROHE TurboStat digital controlled compact cartridge with wax thermoelement
- default setting configurable during installation:
- - automatic safety shut-off after 20 min
- GROHE SafeStop at 38°C
- GROHE Long-Life finish
- GROHE Water Saving - Less water, perfect flow
- recommended pressure 0.1 - 1.0 bar

36 293 000 **DIGITAL CONTROLLER FOR BATH OR SHOWER**



SPARE PARTS, February 2015 – now

- 1: Motor (Spare part-nr. 42337000)
- 2: Fitting ring (Spare part-nr. 47765000)
- 3: Thermostatic compact cartridge 3/4" (Spare part-nr. 47881000)
- 4: Solenoid valve (Spare part-nr. 42340000)
- 5: Non-return valve (Spare part-nr. 47753000)
- 6: Digital controller
- Remote controller for bath or shower (Spare part-nr. 36309000)
- 7: Transceiver (Spare part-nr. 36356000)
- 8: power supply unit UK (Spare part-nr. 48209000)*
- 9: Connection wire (Spare part-nr. 65815000)*
- 10: Socket spanner (Spare part-nr. 19332000)*
- 11: Holder plate for Digital Controller (Spare part-nr. 40710000)*

* Optional accessories