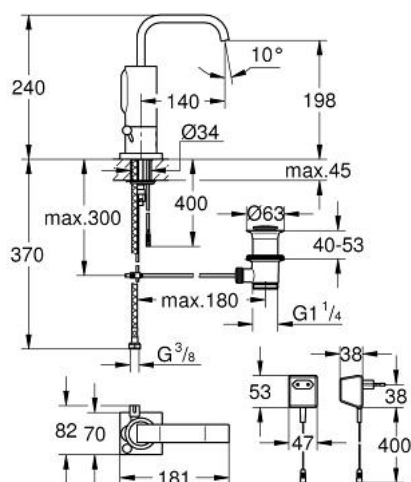


36 097 000 ALLURE E INFRA-RED ELECTRONIC BASIN MIXER 1/2" WITH MIXING DEVICE, ADJUSTABLE TEMPERATURE LIMITER AND WASTE SET

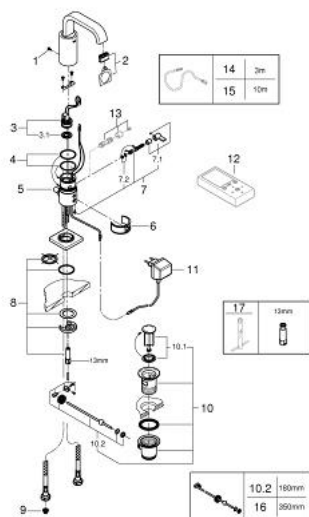


PRODUCT DESCRIPTION

- Colour: chrome
- single hole installation
- with plug transformer 230 V, 50 Hz, 3,2 VA
- GROHE Long-Life finish
- GROHE Water Saving 6.0 l/min flow limiter
- U-spout
- integrated mousseur
- solenoid valve integrated in housing
- pop-up waste set 1 1/4"
- flexible connection hoses
- dirt strainers
- rapid installation system
- automatic safety stop after 60 sec. (factory set)
- additional functions and precise settings by remote control 36 407
- automatic flushing after 1 or 3 days without use
- activation of permanent run for thermal disinfection for 3.5 or 11 min
- CE approved
- noise classification I in accordance with DIN 4109
- type of protection faucet IP 59K
- min. recommended pressure 1.0 bar



36 097 000 ALLURE E INFRA-RED ELECTRONIC BASIN MIXER 1/2" WITH MIXING DEVICE, ADJUSTABLE TEMPERATURE LIMITER AND WASTE SET



SPARE PARTS, June 2016 – now

- 1: Screws (Spare part-nr. 4283100M)
- 2: Mousseur (Spare part-nr. 13220000)
- 3: Solenoid valve (Spare part-nr. 43066000)
- 3.1: Dirt strainer (Spare part-nr. 42798000)
- 4: Sealing washer (Spare part-nr. 4283600M)
- 5: Pop-up rod (Spare part-nr. 42707000)
- 6: Cleaning clip (Spare part-nr. 42837000)
- 7: Mixer spindle with lever (Spare part-nr. 42363000)
- 7.1: Mixing lever (Spare part-nr. 42364000)
- 7.2: Sealing washer (Spare part-nr. 4284000M)
- 8: Fixing set (Spare part-nr. 42841000)
- 9: Filter (Spare part-nr. 4241300M)
- 10: Waste set 1 1/4" (Spare part-nr. 28910000)
- 10.1: Plug (Spare part-nr. 07182000)
- 10.2: Eccentric rod (Spare part-nr. 07052000)
- 11: Plug transformer (Spare part-nr. 43016000)
- 12: Remote control for all GROHE infra-red products (Spare part-nr. 36407000)*
- 13: Hidden mixing device (Spare part-nr. 36209000)*
- 15: Extension cable (Spare part-nr. 36222000)*
- 16: Eccentric rod (Spare part-nr. 07341000)*
- 17: Mounting wrench (Spare part-nr. 19017000)*

* Optional accessories