

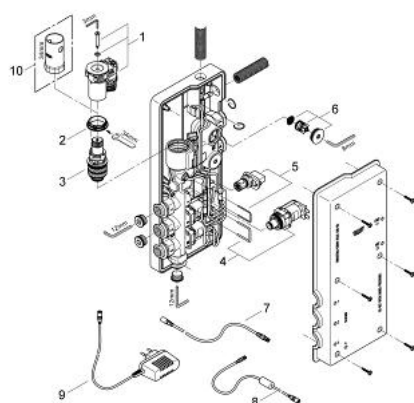
36 072 000 **GROHE ONDUS DIGITAL THERMOSTAT UNIT**



PRODUCT DESCRIPTION

- concealed installation
- for use with:
 - digital bath/shower solutions 27 198, 36 056, 36 057, 36 059
 - 1/2" connections (warm/cold-supplies)
 - 3 outlets 1/2"
- GROHE TurboStat compact cartridge with wax thermoelement
- plug power supply 120 V AC / 6 V DC
- incl. cable protection and cables
- DR-brass
- GROHE Water Saving - Less water, perfect flow

36 072 000 GROHE ONDUS DIGITAL THERMOSTAT UNIT



SPARE PARTS, July 2007 – now

- 1: Motor (Spare part-nr. 42337000)
- 2: Fitting ring (Spare part-nr. 47765000)
- 3: Thermostatic compact cartridge 3/4" (Spare part-nr. 47881000)
- 4: Solenoid valve (Spare part-nr. 42340000)
- 5: Servo motor (Spare part-nr. 42341000)
- 6: Non-return valve (Spare part-nr. 47753000)
- 7: Connection wire (Spare part-nr. 65815000)
- 8: Extension cable (Spare part-nr. 36221000)
- 9: Mains adaptor (Spare part-nr. 65912000)
- 10: Socket spanner (Spare part-nr. 19332000)*

* Optional accessories