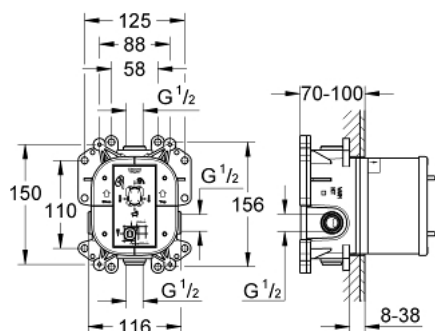


35 501 000 GROHE RAPIDO E UNIVERSAL SINGLE-LEVER MIXER FOR CONCEALED INSTALLATION

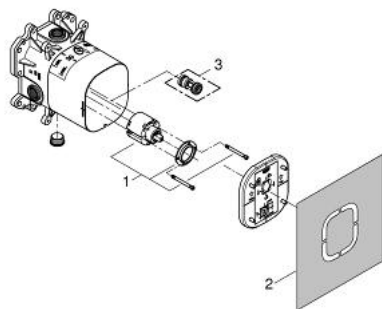


PRODUCT DESCRIPTION

- for use with bath- and shower mixer
- without finishing trim set
- flat installation depth 70 - 100 mm
- easy to install, premounted and tested unit
- GROHE SilkMove 46 mm ceramic cartridge
- adjustable flow rate limiter
- safe to install, stable built-in-box and protective cap
- fixation options for solid walls and dry cladding
- material for wall sealing included
- all connectors 1/2", with identification marking
- diverter for bath-mixer included in finishing trim set
- body made of DR brass
- noise classification I in accordance with DIN 4109
- min. recommended pressure 1.0 bar



35 501 000 **GROHE RAPIDO E UNIVERSAL SINGLE-LEVER MIXER
FOR CONCEALED INSTALLATION**



SPARE PARTS, April 2006 – now

1: Cartridge (Spare part-nr. 46048000)

2: Seal kit (Spare part-nr. 48263000)

3: Safety combination (EN 1717) (Spare part-nr. 29008000)*

* Optional accessories