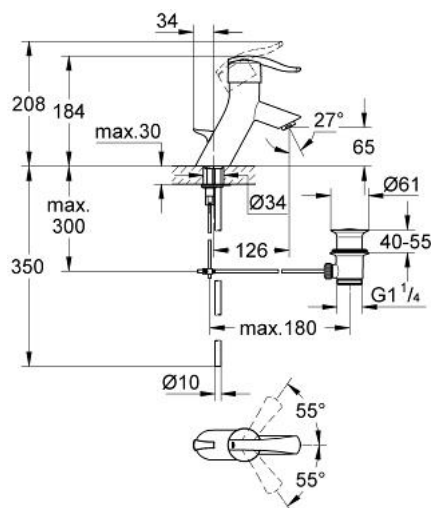


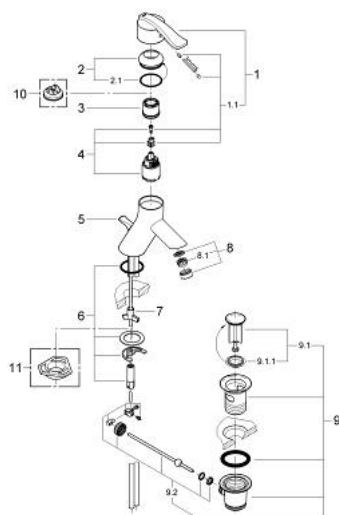
33 180 MB0 ECTOS SINGLE-LEVER BASIN MIXER 1/2"



PRODUCT DESCRIPTION

- single hole installation
- GROHE SilkMove 35 mm ceramic cartridge
- adjustable flow rate limiter
- mousseur
- pop-up waste set 1 1/4"
- copper pipes
- rapid installation system
- optional temperature limiter ref. no. 46 375
- with lever made of crystal in "daVinci azul" and "daVinci satinado".

33 180 MB0 ECTOS SINGLE-LEVER BASIN MIXER 1/2"



SPARE PARTS, January 2001 – now

- 1: Lever (Spare part-nr. 46453MB0)
- 1.1: Fixing set (Spare part-nr. 46372V00)
- 2: Cap (Spare part-nr. 46182AV0)
- 2.1: Sealing washer (Spare part-nr. 0591500M)
- 3: Ring (Spare part-nr. 03425000)
- 4: Cartridge (Spare part-nr. 46374000)
- 5: Pop-up rod (Spare part-nr. 46189AV0)
- 6: Shank mounting kit (Spare part-nr. 46122000)
- 7: Compensation ring (Spare part-nr. 03435000)
- 8: Mousseur (Spare part-nr. 13929AV0)
- 8.1: Replacement flow control M22x1 and M24x1 (Spare part-nr. 45002000)
- 9: Waste set 1 1/4" (Spare part-nr. 28910AV0)
- 9.1: Plug (Spare part-nr. 07182AV0)
- 9.1.1: Seal (Spare part-nr. 0506500M)
- 9.2: Eccentric rod (Spare part-nr. 07052000)
- 10: Temperature limiter (Spare part-nr. 46375000)*
- 11: Support plate (Spare part-nr. 05334000)*
- * Optional accessories