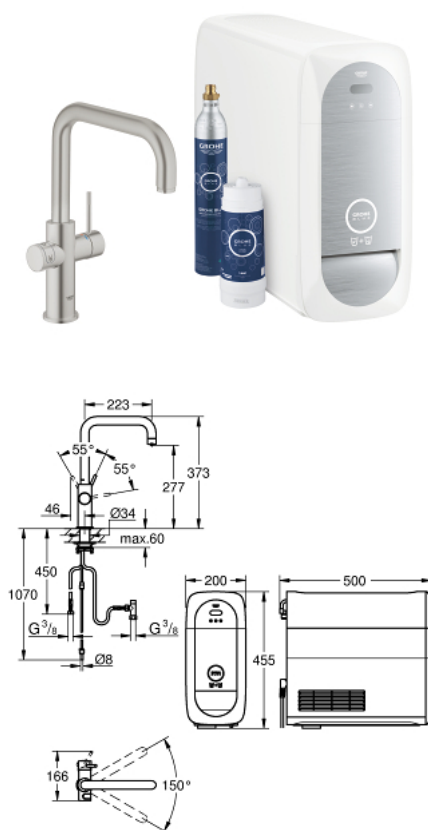


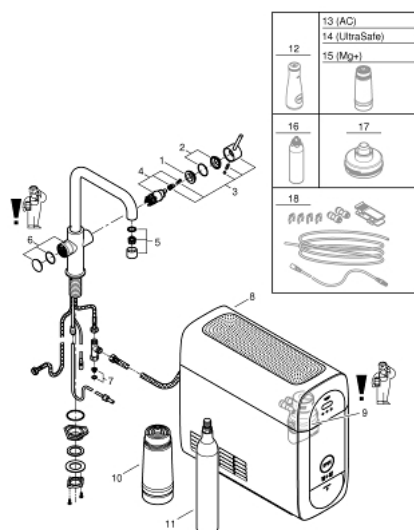
## 31 456 DC0 GROHE BLUE HOME U-SPOUT STARTER KIT



### PRODUCT DESCRIPTION

- Colour: supersteel
- consisting of:
  - GROHE Blue Home single-lever sink mixer with filter function
  - single hole installation
  - U-spout
  - push buttons for 3 types of filtered and chilled table water
  - still, medium, sparkling
- GROHE Long-Life finish
- GROHE SilkMove 28 mm ceramic cartridge
- swivel tubular spout
- swivel area 150°
- separate inner water ways for filtered and non-filtered water
- flexible connection hoses
- GROHE Blue Home cooler
- delivers 3 liters of chilled water per hour
- 180 Watt cooling unit, 230 V, 50 Hz
- type of protection IP 21
- CE approved
- requires ventilation holes in the bottom of the kitchen cabinet
- adjustable for GROHE Blue filter S-Size, GROHE Blue activated carbon filter and GROHE Blue magnesium + zinc filter
- GROHE Blue filter S-Size and filter head with flexible water hardness adjustment for regions with water hardness of more than 9° dKH
- for regions with water hardness below 9° dKH please order activated carbon filter 40 547 001
- GROHE Blue 425 g CO<sub>2</sub> bottle

## 31 456 DC0 GROHE BLUE HOME U-SPOUT STARTER KIT



### SPARE PARTS, November 2014 – now

- 1: Fitting ring (Spare part-nr. 07419000)
- 2: Cap (Spare part-nr. 46581DC0)
- 3: Lever (Spare part-nr. 46957DC0)
- 4: Cartridge (Spare part-nr. 46580000)
- 5: Flow control (Spare part-nr. 48343DC0)
- 6: Operating unit (Spare part-nr. 46958DC0)
- 7: Dirt strainer (Spare part-nr. 47576000)
- 8: Cooler (Spare part-nr. 40711000)
- 9: Filter head (Spare part-nr. 48344000)
- 10: Filter S-Size (Spare part-nr. 40404001)
- 11: Starter kit 425 g CO<sub>2</sub> bottles (4 pieces) (Spare part-nr. 40422000)
- 12: Glass carafe (Spare part-nr. 40405000)\*
- 13: Activated carbon filter (Spare part-nr. 40547001)\*
- 14: Magnesium+ filter (Spare part-nr. 40691001)\*
- 15: Cleaning cartridge (Spare part-nr. 40434001)\*
- 16: Cleaning cartridge adapter (Spare part-nr. 40694000)\*
- 17: Extension set (Spare part-nr. 40843000)\*

\* Optional accessories