

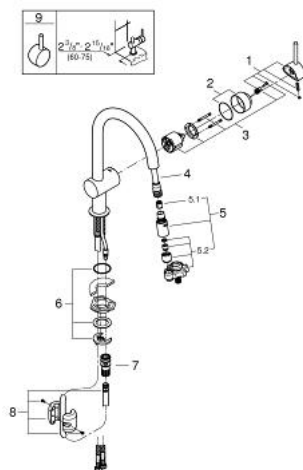
31 378 DC0 MINTA SINGLE-LEVER SINK MIXER 1/2"



PRODUCT DESCRIPTION

- Colour: supersteel
- extractable trigger spray Dual integrated
- single hole installation
- GROHE SilkMove 46 mm ceramic cartridge
- flow straightener
- adjustable flow rate limiter
- swivel tubular spout
- extractable trigger spray integrated
- automatic returning
- integrated non-return valve
- diverter: laminar spray/SpeedClean shower jet
- SpeedClean anti-limescale system
- automatic return to laminar spray
- flexible connection hoses
- rapid installation system
- lever
- variable handle positioning
- projection 217 mm
- protected against backflow

31 378 DC0 MINTA SINGLE-LEVER SINK MIXER 1/2"



SPARE PARTS, March 2016 – now

- 1: Lever (Spare part-nr. 46015DC0)
- 2: Cap (Spare part-nr. 46025DC0)
- 3: Cartridge (Spare part-nr. 46048000)
- 4: Hose for sink mixer with pull-out dual spray or mousseur (Spare part-nr. 48293000)
- 5: Pull out spray (Spare part-nr. 46857DC0)
- 5.1: Non-return valve (Spare part-nr. 08565000)
- 5.2: Flow straightener (Spare part-nr. 13997000)
- 6: Shank mounting kit (Spare part-nr. 46345000)
- 7: Snap coupling (Spare part-nr. 48220000)
- 8: Lever (Spare part-nr. 40684DC0)*

* Optional accessories