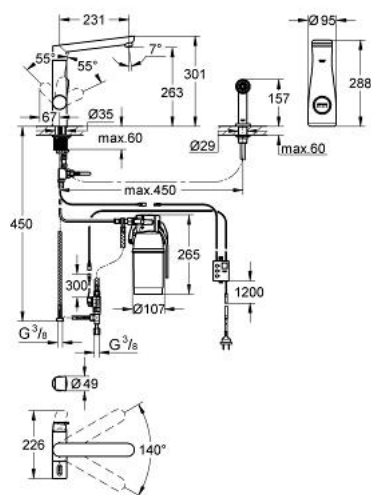


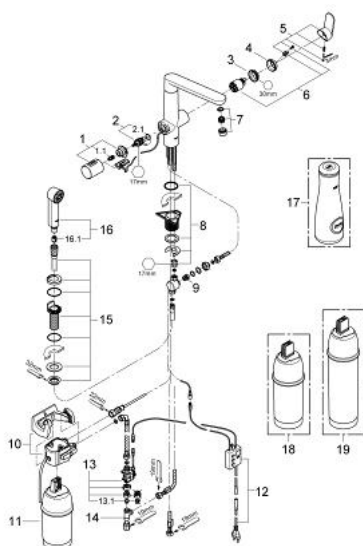
## 31 354 DC0 GROHE BLUE K7 PURE STARTER KIT



### PRODUCT DESCRIPTION

- Colour: supersteel
- consisting of:
- GROHE Blue K7 single-lever sink mixer with filter function and SpeedClean side spray
- two hole installation
- separate handle for filtered water
- headpart 1/2"
- GROHE SilkMove 35 mm ceramic cartridge
- adjustable flow rate limiter
- GROHE Long-Life finish
- swivel cast spout
- swivel area 140°
- separate inner water ways for filtered and non-filtered water
- flexible connection hoses
- type of protection IP 55
- CE approved
- main switching power supply 100 - 240 V AC 50/60 Hz with safety extra-low voltage (SELV) 6 V DC to filter change display unit
- adjustable for 600 litre, 1500 litre or 3000 litre filter cartridges
- GROHE Blue 600 l filter
- GROHE Blue size S filter, filter head with flexible adjustment
- GROHE Blue carafe

## 31 354 DC0 GROHE BLUE K7 PURE STARTER KIT



### SPARE PARTS, March 2012 – now

- 1: Handle (Spare part-nr. 46652DC0)
- 1.1: Snap insert (Spare part-nr. 0538600M)
- 2: Headpart (Spare part-nr. 64368000)
- 2.1: O-ring Ø 18.2 x Ø 1.7 (Spare part-nr. 0392400M)
- 3: Screw coupling (Spare part-nr. 46460000)
- 4: Cap (Spare part-nr. 46116DC0)
- 5: Lever (Spare part-nr. 46729DC0)
- 6: Cartridge (Spare part-nr. 46374000)
- 7: Mousseur (Spare part-nr. 48196DC0)
- 8: Shank mounting kit (Spare part-nr. 46346000)
- 8.1: Stop (Spare part-nr. 04174000)
- 9: Cone (Spare part-nr. 07970000)
- 10: Filter head (Spare part-nr. 64508000)
- 11: Filter (Spare part-nr. 40404000)
- 12: Control unit (Spare part-nr. 48197000)
- 13: Solenoid valve (Spare part-nr. 42390000)
- 13.1: Dirt strainer (Spare part-nr. 42395000)
- 14: Original WAS® T-piece 3/8" (Spare part-nr. 41007000)
- 15: Spray holder (Spare part-nr. 46730DC0)
- 16: Pull out shower (Spare part-nr. 64158DC0)
- 16.1: Non-return valve (Spare part-nr. 08565000)
- 17: Glass carafe (Spare part-nr. 40405000)\*
- 18: Filter (Spare part-nr. 40430000)\*
- 19: Filter (Spare part-nr. 40412000)\*

\* Optional accessories