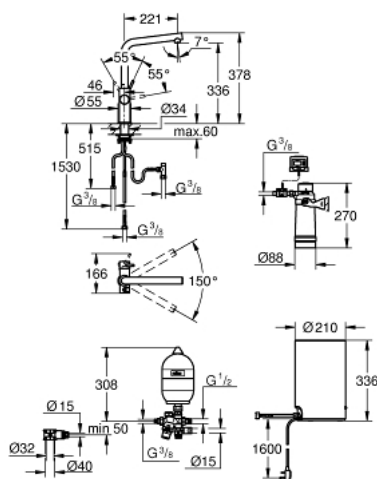


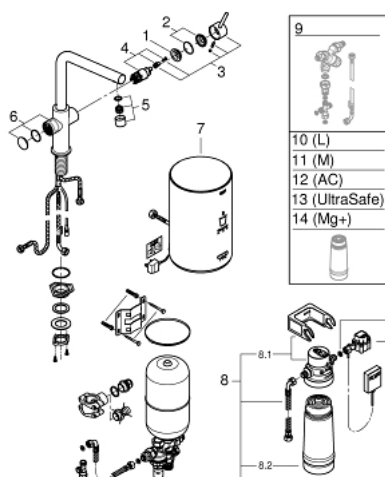
30 341 DL1 GROHE RED DUO FAUCET AND M SIZE BOILER



PRODUCT DESCRIPTION

- Colour: brushed warm sunset
- consisting of:
 - GROHE Red Duo single-lever sink mixer
 - single hole installation
 - L-spout
 - GROHE ChildLock push buttons for boiling water
 - TÜV certified triple electronic safeguards against accidental activation of boiling water
 - GROHE Long-Life finish
 - GROHE SilkMove 28 mm ceramic cartridge
 - insulated tubular spout
 - swivel area 150°
 - separate water ways
 - flexible connection hoses
 - connection to GROHE Red boiler
- GROHE Red boiler M size
- reservoir for boiling and hot water
- 3 liter 100° C boiling water
- 4 liter total capacity
- required inlet pressure: 1-7 bar
- with flexible connection hose and outlet for boiling water
- CE approved
- power supply 230 V 50 Hz
- max. power consumption 2100 W
- standby power consumption 15 W
- energy efficiency class A
- GROHE Blue S-Size filter starter set
- for protection of the boiler from limescale
- capacity 600 l at 20° dKH
- flow rate measuring unit

30 341 DL1 GROHE RED DUO FAUCET AND M SIZE BOILER



SPARE PARTS, March 2018 – now

- 1: Fitting ring (Spare part-nr. 07419000)
 - 4: Cartridge (Spare part-nr. 46580000)
 - 5: Please contact spare-part-info@grohe.com (Spare part-nr. NOSPAREPART)
 - 6: Operating unit (Spare part-nr. 46997DL0)
 - 7: Boiler Size M (Spare part-nr. 40842001)
 - 8: S-size filter starter set (Spare part-nr. 40438001)
 - 8.1: Filter head (Spare part-nr. 64508001)
 - 8.2: Filter S-Size (Spare part-nr. 40404001)
 - 9: Mixing valve (Spare part-nr. 40841001)*
 - 10: Filter L-Size (Spare part-nr. 40412001)*
 - 11: Filter M-Size (Spare part-nr. 40430001)*
 - 12: Activated carbon filter (Spare part-nr. 40547001)*
 - 13: UltraSafe filter (Spare part-nr. 40575001)*
 - 14: Magnesium+ filter (Spare part-nr. 40691001)*
- * Optional accessories