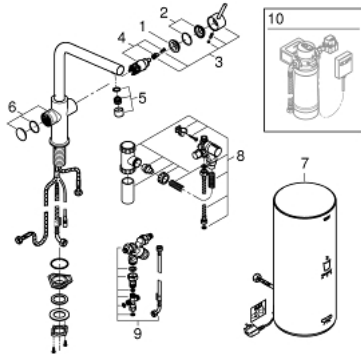


The technical drawing shows a kitchen faucet and a water filter. The faucet is a single-lever, cross-handle design with a curved spout. The top-down view shows a spout diameter of 55 mm, a base diameter of 34 mm, and a maximum base width of 60 mm. The spout height is 378 mm, and the base height is 1530 mm. The water filter is a cylindrical unit with a height of 491 mm and a diameter of 210 mm. It features the Grohe logo and a water drop icon.

- Colour: brushed warm sunset
- consisting of:
- GROHE Red Duo single-lever sink mixer
- single hole installation
- L-spout
- GROHE ChildLock push buttons for boiling water
- TÜV certified triple electronic safeguards against accidental activation of boiling water
- GROHE Long-Life finish
- GROHE SilkMove 28 mm ceramic cartridge
- insulated tubular spout
- swivel area 150°
- separate water ways
- flexible connection hoses
- connection to GROHE Red boiler
- GROHE Red boiler L size
- reservoir for boiling and hot water
- 5.5 liter 100° C boiling water
- 7 liter total capacity
- required inlet pressure: 1-7 bar
- with flexible connection hose and outlet for boiling water
- CE approved
- power supply 230 V 50 Hz
- max. power consumption 2100 W
- standby power consumption 15 W
- energy efficiency class A
- GROHE Red mixing valve
- for thermostatic mixing of mains and boiling water to generate warm water
- adjustable between 35°C and 75°C
- hot fill and cold fill installation possible
- including 70 cm connection hose, manifold and wall fixation

30 324 DL1 GROHE RED DUO FAUCET AND L SIZE BOILER



SPARE PARTS, March 2018 – now

- 1: Fitting ring (Spare part-nr. 07419000)
- 4: Cartridge (Spare part-nr. 46580000)
- 5: Please contact spare-part-info@grohe.com (Spare part-nr. NOSPAREPART)
- 6: Operating unit (Spare part-nr. 46997DL0)
- 7: Boiler Size L (Spare part-nr. 40831001)
- 8: Safety group (Spare part-nr. 48372000)
- 9: Mixing valve (Spare part-nr. 40841001)
- 10: S-size filter starter set (Spare part-nr. 40438001)*

* Optional accessories