

The technical drawing consists of two parts: a kitchen faucet and a water heater.

**Kitchen Faucet:**

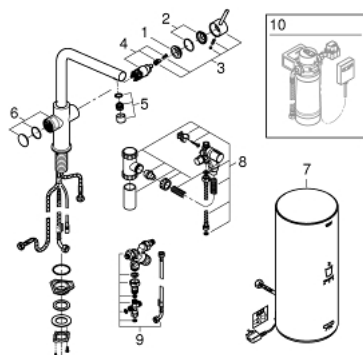
- Side View:** Shows the faucet handle, spout, and base. Dimensions include a spout height of 378 mm, a base height of 336 mm, and a total height of 515 mm. The spout has a 7° angle and a 55° angle. The base has a 1530 mm width and a 166 mm height. The faucet body has a 150° angle and a 166 mm height.
- Top View:** Shows the faucet handle and base. Dimensions include a handle width of 221 mm, a base width of 46 mm, and a base diameter of Ø55 mm. The faucet body has a 55° angle and a 336 mm height. The base has a 1530 mm width and a 166 mm height.
- Connection Details:** Shows the faucet body with a 55° angle and a 336 mm height. The base has a 1530 mm width and a 166 mm height. The faucet body has a 150° angle and a 166 mm height.

**Water Heater:**

- Side View:** Shows the water heater unit. Dimensions include a total height of 491 mm and a base height of 1600 mm. The unit has a Ø210 mm diameter.
- Top View:** Shows the connection ports. Dimensions include a 1600 mm width and a 1600 mm height. The connection ports are labeled G 3/4 and G 1/2.

- Colour: brushed hard graphite
- consisting of:
- GROHE Red Duo single-lever sink mixer
- single hole installation
- L-spout
- GROHE ChildLock push buttons for boiling water
- TÜV certified triple electronic safeguards against accidental activation of boiling water
- GROHE Long-Life finish
- GROHE SilkMove 28 mm ceramic cartridge
- insulated tubular spout
- swivel area 150°
- separate water ways
- flexible connection hoses
- connection to GROHE Red boiler
- GROHE Red boiler L size
- reservoir for boiling and hot water
- 5.5 liter 100° C boiling water
- 7 liter total capacity
- required inlet pressure: 1-7 bar
- with flexible connection hose and outlet for boiling water
- CE approved
- power supply 230 V 50 Hz
- max. power consumption 2100 W
- standby power consumption 15 W
- energy efficiency class A
- GROHE Red mixing valve
- for thermostatic mixing of mains and boiling water to generate warm water
- adjustable between 35°C and 75°C
- hot fill and cold fill installation possible
- including 70 cm connection hose, manifold and wall fixation

## 30 324 AL1 GROHE RED DUO FAUCET AND L SIZE BOILER



### SPARE PARTS, March 2018 – now

- 1: Fitting ring (Spare part-nr. 07419000)
- 2: Cap (Spare part-nr. 46581AL0)
- 3: Lever (Spare part-nr. 46957AL0)
- 4: Cartridge (Spare part-nr. 46580000)
- 5: Mousseur (Spare part-nr. 13999AL0)
- 6: Operating unit (Spare part-nr. 46997AL0)
- 7: Boiler Size L (Spare part-nr. 40831001)
- 8: Safety group (Spare part-nr. 48372000)
- 9: Mixing valve (Spare part-nr. 40841001)
- 10: S-size filter starter set (Spare part-nr. 40438001)\*

\* Optional accessories