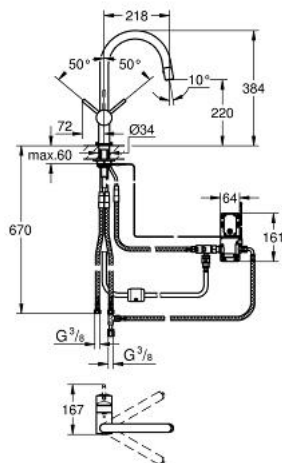


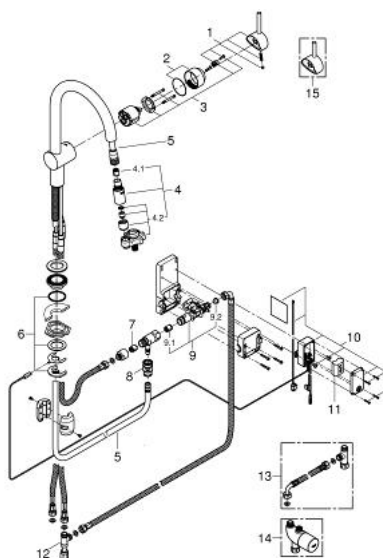
30 276 000 FLAIR TOUCH ELECTRONIC SINGLE-LEVER SINK MIXER 1/2"



PRODUCT DESCRIPTION

- Colour: chrome
- single hole installation
- Touch: activation of cold water via skin contact
- battery supply 6 V lithium-battery, type CR-P2
- CE approved
- indication of battery status by different impulses
- safety shutdown circuit
- solenoid valve
- automatic safety stop after 60 sec. (factory set)
- type of protection IP 44
- GROHE SilkMove 46 mm ceramic cartridge
- GROHE Long-Life finish
- C-spout
- swivel tubular spout
- adjustable flow rate limiter
- swivel area 360°
- with extractable dual spray
- automatic returning
- integrated non-return valve
- diverter: laminar spray/SpeedClean shower jet
- automatic return to laminar spray
- flexible connection hoses
- rapid installation system
- protected against backflow
- optional:
 - upgrade for Touch function with mixed water:
 - Grohtherm Micro (34 487 000)
 - connection set 47 533 000

30 276 000 FLAIR TOUCH ELECTRONIC SINGLE-LEVER SINK MIXER 1/2"



SPARE PARTS, June 2014 – now

- 1: Lever (Spare part-nr. 46015000)
- 2: Cap (Spare part-nr. 46025000)
- 3: Cartridge (Spare part-nr. 46048000)
- 4: Pull out spray (Spare part-nr. 46857000)
- 4.1: Non-return valve (Spare part-nr. 08565000)
- 4.2: Flow straightener (Spare part-nr. 13997000)
- 5: Shower hose (Spare part-nr. 46881000)
- 6: Shank mounting kit (Spare part-nr. 46345000)
- 7: Non-return valve (Spare part-nr. 08565000)
- 8: Quick coupling (Spare part-nr. 46338000)
- 9: Solenoid valve (Spare part-nr. 48213000)
- 9.1: Non-return valve (Spare part-nr. 08565000)
- 9.2: Dirt strainer (Spare part-nr. 42395000)
- 10: Control unit (Spare part-nr. 48214000)
- 11: Battery (Spare part-nr. 42886000)
- 12: Original WAS® T-piece 3/8" (Spare part-nr. 41007000)
- 13: Connection set (Spare part-nr. 47533000)*
- 14: Thermostatic scalding protection (Spare part-nr. 34487000)*
- 15: Lever (Spare part-nr. 40684000)*

* Optional accessories