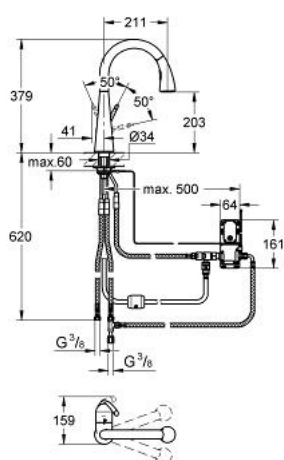


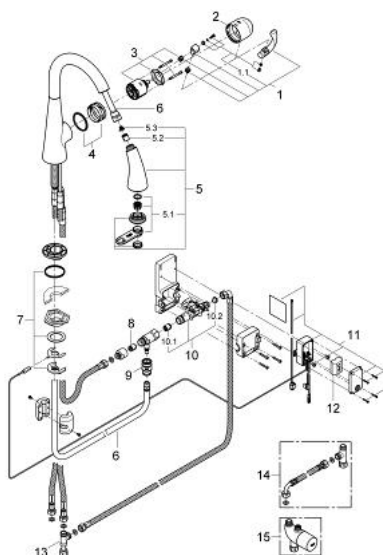
30 219 000 ZEDRA TOUCH ELECTRONIC SINGLE-LEVER SINK MIXER 1/2"



PRODUCT DESCRIPTION

- Colour: chrome
- single hole installation
- Touch: activation of cold water via skin contact
- battery supply 6 V lithium-battery, type CR-P2
- CE approved
- indication of battery status through different pulses of water
- safety shut down circuit (when battery nearly empty)
- solenoid valve
- automatic safety stop after 60 sec. (factory set)
- type of protection IP 44
- GROHE SilkMove 46 mm ceramic cartridge
- GROHE Long-Life finish
- GROHE SuperSteel Infinity Finish
- SpeedClean anti-limescale system
- swivel tubular spout
- swivel area 360°
- adjustable flow rate limiter
- pull-out dual spray - switches back and forth between regular flow and spray
- automatic returning
- integrated non-return valve
- diverter: mousseur/SpeedClean shower jet
- automatic return to mousseur
- flexible connection hoses
- rapid installation system from the top
- protected against backflow
- optional:
 - upgrade for Touch function with mixed water:
 - Grohtherm Micro (34 487 000)
- connection: 47 533 000
- min. recommended pressure 1.0 bar

30 219 000 ZEDRA TOUCH ELECTRONIC SINGLE-LEVER SINK MIXER 1/2"



SPARE PARTS, May 2013 – now

- 1: Lever (Spare part-nr. 46654000)
- 1.1: Fixing set (Spare part-nr. 46310000)
- 2: Cap (Spare part-nr. 46655000)
- 3: Cartridge (Spare part-nr. 46048000)
- 4: Guide and slide ring (Spare part-nr. 46632V00)
- 5: Pull out spray (Spare part-nr. 46875NC0)
- 5.1: Mousseur (Spare part-nr. 46711000)
- 5.2: Non-return valve (Spare part-nr. 08565000)
- 5.3: Dirt strainer (Spare part-nr. 0676800M)
- 6: Shower hose (Spare part-nr. 46881000)
- 7: Shank mounting kit (Spare part-nr. 46345000)
- 8: Non-return valve (Spare part-nr. 08565000)
- 9: Quick coupling (Spare part-nr. 46338000)
- 10: Solenoid valve (Spare part-nr. 48213000)
- 10.1: Non-return valve (Spare part-nr. 08565000)
- 10.2: Dirt strainer (Spare part-nr. 42395000)
- 11: Control unit (Spare part-nr. 48214000)
- 12: Battery (Spare part-nr. 42886000)
- 13: Original WAS® T-piece 3/8" (Spare part-nr. 41007000)
- 14: Connection set (Spare part-nr. 47533000)*
- 15: Thermostatic scalding protection (Spare part-nr. 34487000)*

* Optional accessories