

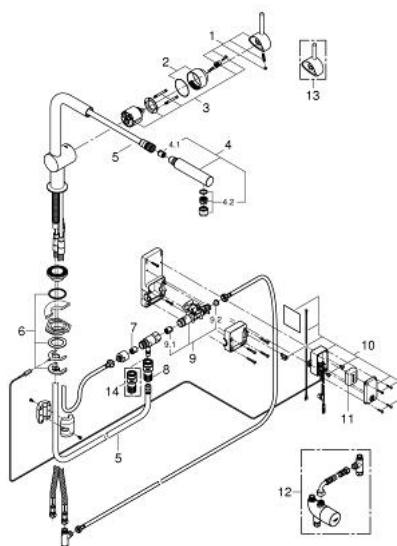
30 218 DC0 MINTA TOUCH PULL-DOWN KITCHEN FAUCET WITH TOUCH TECHNOLOGY



PRODUCT DESCRIPTION

- Colour: supersteel
- single hole installation
- Touch: activation of cold water via skin contact
- battery supply 6 V lithium-battery, type CR-P2
- CE approved
- indication of battery status through different pulses of water
- solenoid valve
- safety shut down circuit (when battery nearly empty)
- automatic safety stop after 60 sec. (factory set)
- type of protection IP 44
- GROHE SilkMove 46 mm ceramic cartridge
- GROHE Long-Life finish
- GROHE SuperSteel Infinity Finish
- L-spout
- swivel tubular spout
- adjustable flow rate limiter
- swivel area 360°
- pull-out mousseur
- automatic returning
- integrated non-return valve
- flexible connection hoses
- rapid installation system
- protected against backflow
- optional:
 - upgrade for Touch function with mixed water:
 - Grohtherm Micro 34 507 000 incl. connection set

30 218 DC0 MINTA TOUCH PULL-DOWN KITCHEN FAUCET WITH TOUCH TECHNOLOGY



SPARE PARTS, May 2012 – now

- 1: Lever (Spare part-nr. 46015DC0)
- 2: Cap (Spare part-nr. 46025DC0)
- 3: Cartridge (Spare part-nr. 46048000)
- 4: Pull out spray (Spare part-nr. 46858DC0)
- 4.1: Non-return valve (Spare part-nr. 08565000)
- 4.2: Mousseur (Spare part-nr. 13967DC0)
- 5: Shower hose (Spare part-nr. 46881000)
- 6: Shank mounting kit (Spare part-nr. 46345000)
- 7: Non-return valve (Spare part-nr. 08565000)
- 8: Snap coupling (Spare part-nr. 48220000)
- 9: Solenoid valve (Spare part-nr. 48213000)
- 9.1: Non-return valve (Spare part-nr. 08565000)
- 9.2: Dirt strainer (Spare part-nr. 42395000)
- 10: Control unit (Spare part-nr. 48214000)
- 11: Battery (Spare part-nr. 42886000)
- 12: Thermostatic scalding protection (Spare part-nr. 34507000)*
- 13: Lever (Spare part-nr. 40684DC0)*
- 14: Quick coupling (Spare part-nr. 64999000)*

* Optional accessories