

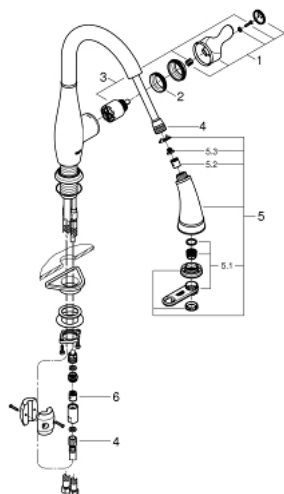
30 213 000 **PARKFIELD SINGLE-LEVER SINK MIXER 1/2"**



PRODUCT DESCRIPTION

- Colour: chrome
- single hole installation
- swivel tubular spout
- swivel area 360°
- adjustable flow rate limiter
- pull-out dual spray - switches back and forth between regular flow and spray
- ball joint glideflex hose
- diverter: mousseur/SpeedClean shower jet
- integrated non-return valve
- automatic return to mousseur
- flexible connection hoses
- rapid installation system
- protected against backflow
- SpeedClean anti-limescale system
- GROHE SilkMove 35 mm ceramic cartridge
- GROHE Long-Life finish
- GROHE SuperSteel Infinity Finish
- projection 211 mm
- single lever handle
- no backsplash, lever opens to the front
- weight operated pull back mechanism for hose
- 360° ball-joint on hose for flexible handling of spray head
- Stainless steel braided hose
- stainless steel braided supply lines
- forward rotation lever, does not hit backsplash

30 213 000 **PARKFIELD SINGLE-LEVER SINK MIXER 1/2"**



SPARE PARTS, November 2016 – now

- 1: Lever (Spare part-nr. 46889000)
- 2: Screw coupling (Spare part-nr. 46460000)
- 3: Cartridge (Spare part-nr. 46374000)
- 4: Shower hose (Spare part-nr. 46887000)
- 5: Pull out spray (Spare part-nr. 46970NC0)
- 5.1: Mousseur (Spare part-nr. 46711000)
- 5.2: Non-return valve (Spare part-nr. 08565000)
- 5.3: Dirt strainer (Spare part-nr. 0676800M)
- 6: Non-return valve (Spare part-nr. 48224000)