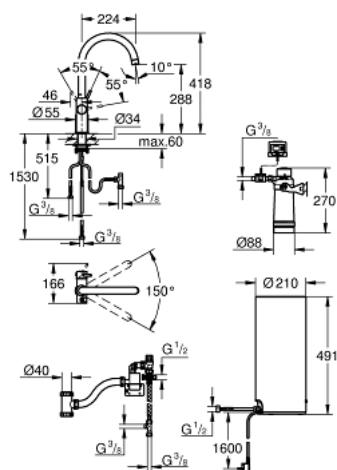


30 079 DC1 GROHE RED DUO FAUCET AND L SIZE BOILER



PRODUCT DESCRIPTION

- Colour: supersteel
- consisting of:
 - GROHE Red Duo single-lever sink mixer
 - single hole installation
 - C-spout
 - GROHE ChildLock push buttons for boiling water
 - TÜV certified triple electronic safeguards against accidental activation of boiling water
 - GROHE Long-Life finish
 - GROHE SilkMove 28 mm ceramic cartridge
- insulated tubular spout
- swivel area 150°
- separate water ways
- flexible connection hoses
- connection to GROHE Red boiler
- GROHE Red boiler L size
- reservoir for boiling and hot water
- 5.5 liter 100° C boiling water
- 7 liter total capacity
- required inlet pressure: 1-7 bar
- with flexible connection hose and outlet for boiling water
- CE approved
- power supply 230 V 50 Hz
- max. power consumption 2100 W
- standby power consumption 15 W
- energy efficiency class A
- GROHE Blue S-Size filter starter set
- for protection of the boiler from limescale
- capacity 600 l at 20° dKH
- flow rate measuring unit

30 079 DC1 GROHE RED DUO FAUCET AND L SIZE BOILER



SPARE PARTS, August 2013 – now

- 1: Fitting ring (Spare part-nr. 07419000)
 - 2: Cap (Spare part-nr. 46581DC0)
 - 3: Lever (Spare part-nr. 46957DC0)
 - 4: Cartridge (Spare part-nr. 46580000)
 - 5: Flow control (Spare part-nr. 48370DC0)
 - 6: Operating unit (Spare part-nr. 46997DC0)
 - 7: Boiler Size L (Spare part-nr. 40831001)
 - 8: Safety group (Spare part-nr. 48371000)
 - 9: S-size filter starter set (Spare part-nr. 40438001)
 - 9.1: Filter head (Spare part-nr. 64508001)
 - 9.2: Filter S-Size (Spare part-nr. 40404001)
 - 10: Mixing valve (Spare part-nr. 40841001)*
 - 11: Filter L-Size (Spare part-nr. 40412001)*
 - 12: Filter M-Size (Spare part-nr. 40430001)*
 - 13: Activated carbon filter (Spare part-nr. 40547001)*
 - 14: UltraSafe filter (Spare part-nr. 40575001)*
 - 15: Magnesium+ filter (Spare part-nr. 40691001)*
- * Optional accessories