

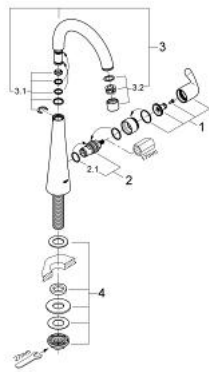
30 026 DC0 **ZEDRA PILLAR TAP 1/2"**



PRODUCT DESCRIPTION

- Colour: supersteel
- single hole installation
- ceramic headpart 1/2", 90°
- GROHE Long-Life finish
- GROHE RealSteel product material (stainless steel body)
- swivel tubular spout
- swivel area 360°
- projection 141 mm
- mousseur
- GROHE SuperSteel Infinity Finish

30 026 DC0 ZEDRA PILLAR TAP 1/2"



SPARE PARTS, August 2008 – now

- 1: Lever (Spare part-nr. 48014DC0)
- 2: Ceramic headpart 1/2" (Spare part-nr. 45882000)
- 2.1: O-ring Ø 18.2 x Ø 1.7 (Spare part-nr. 0392400M)
- 3: Spout (Spare part-nr. 13202SD0)
- 3.1: Spout connection set (Spare part-nr. 45399000)
- 3.2: Mousseur (Spare part-nr. 13935DC0)
- 4: Shank mounting kit (Spare part-nr. 45004000)