

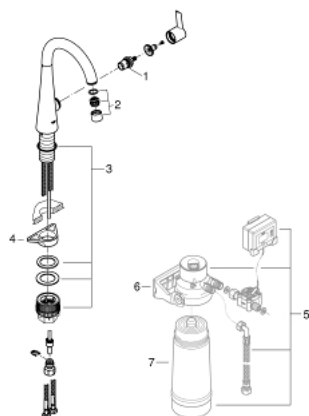
30 026 20F **ZEDRA PILLAR TAP 1/2"**



PRODUCT DESCRIPTION

- Colour: chrome
- single hole installation
- handle for filtered table water
- ceramic headpart 1/2", 90°
- GROHE Long-Life finish
- swivel tubular spout
- swivel area 140°
- flexible connection hoses
- metal fixation set
- Lead and Nickel Free Inner Water Ways
- requires GROHE filter set including filter head (40 438 001), sold separately
- maximum flow rate (at 3 bar): 6 l/min

30 026 20F ZEDRA PILLAR TAP 1/2"



SPARE PARTS, July 2019 – December 2021

- 1: Ceramic cartridge (Spare part-nr. 46318000)
- 2: C-spout (Spare part-nr. 13395000)
- 2.1: Mousseur (Spare part-nr. 13935000)
- 2.2: Sealing washer (Spare part-nr. 0128500M)
- 2.3: Safety ring (Spare part-nr. 0485300M)
- 3: Mounting set (Spare part-nr. 48477000)
- 4: Support plate (Spare part-nr. 05334000)
- 5: S-size filter starter set (Spare part-nr. 40438001)*
- 6: Filter head (Spare part-nr. 64508001)*
- 7: Filter S-Size (Spare part-nr. 40404001)*

* Optional accessories