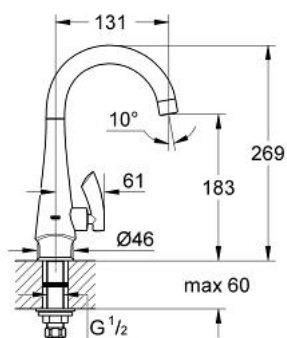


30 004 SD0 K4 PILLAR TAP 1/2"

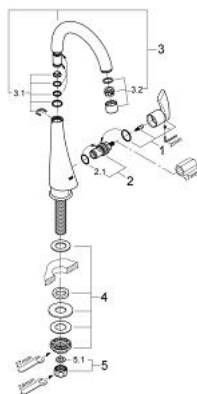


PRODUCT DESCRIPTION

- Colour: stainless steel
- headpart 1/2" - 90°
- GROHE Long-Life finish
- GROHE RealSteel product material (stainless steel body)
- swivel tubular spout
- mousseur
- an adaptor to change the connection from American to European standards is included.
- flexible connection hose
- projection 131 mm
- coordinated K4 design



30 004 SD0 K4 PILLAR TAP 1/2"



SPARE PARTS, November 2004 – now

- 1: Lever (Spare part-nr. 45394SD0)
- 2: Ceramic headpart 1/2" (Spare part-nr. 45882000)
- 3: Spout (Spare part-nr. 13202SD0)
- 3.1: Spout connection set (Spare part-nr. 45399000)
- 3.2: Mousseur (Spare part-nr. 13935DC0)
- 4: Shank mounting kit (Spare part-nr. 45004000)
- 5: Coupling nut 1/2" (Spare part-nr. 1290100M)
- 5.1: Fibre seal Ø 18,5 x Ø 12 x 2 (Spare part-nr. 0138900M)