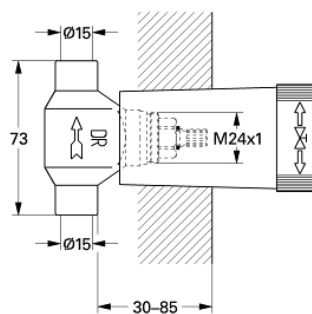


29 801 000 **CONCEALED STOP-VALVE, 1/2"**

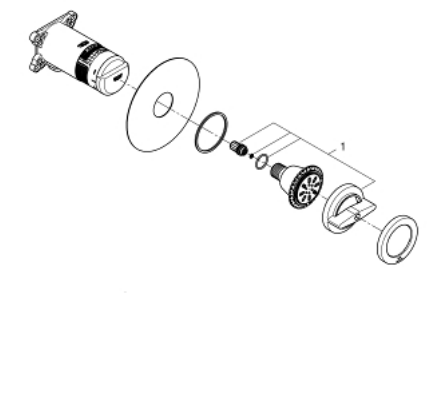


PRODUCT DESCRIPTION

- pre-assembled headpart 1/2"
- short spindle
- protection sleeve
- soldered connection Ø 15 mm
- DR-brass
- without handle



29 801 000 **CONCEALED STOP-VALVE, 1/2"**



SPARE PARTS, January 1986 – now

1: Headpart 1/2" (Spare part-nr. 07146000)

1.1: Sealing washer Ø 6 x Ø 2 (Spare part-nr. 0128300M)

1.2: O-ring Ø 18.2 x Ø 1.7 (Spare part-nr. 0392400M)

1.3: Seal (Spare part-nr. 0529100M)

2: Seat (Spare part-nr. 45023000)