

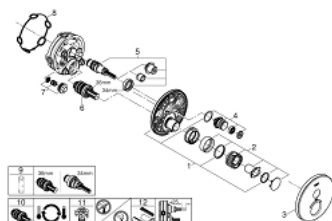
29 159 LS0 GROHTHERM SMARTCONTROL THERMOSTAT FOR CONCEALED INSTALLATION WITH ONE VALVE



PRODUCT DESCRIPTION

- Colour: moon white
- set for final installation for
- GROHE Rapido SmartBox (35 601)
- metal wall escutcheon with GROHE FastFixation (covered escutcheon and shaft sealing, covered fixing), retroactively 6° adjustable
- 10 mm thin profile escutcheon
- GROHE Long-Life finish
- GROHE SmartControl push for ON-OFF, turn for volume adjustment from GROHE Water Saving to Full Flow
- exchangeable symbols
- GROHE TurboStat compact cartridge with wax thermoelement
- GROHE SafeStop safety button at 100°F/38°C
- GROHE SafeStop Plus temperature limiter at 115° F/46° C
- built-in non return valves and dirt strainers
- cover plate in moon white acrylic glass
- without roughing-in set
- flow performance 7.5 gpm
- optional flow reducer for CALGreen compliance included

29 159 LS0 GROHTHERM SMARTCONTROL THERMOSTAT FOR CONCEALED INSTALLATION WITH ONE VALVE



SPARE PARTS, June 2018 – now

- 1: Mounting plate (Spare part-nr. 48362000)
- 2: Temperature control handle (Spare part-nr. 49029000)
- 3: Escutcheon (Spare part-nr. 49045LS0)
- 4: Push button (Spare part-nr. 48361000)
- 5: Cartridge (Spare part-nr. 48359000)
- 5.1: Spindle (Spare part-nr. 49088000)
- 6: Thermostatic compact cartridge 3/4" (Spare part-nr. 49028000)
- 7: Non-return valve (Spare part-nr. 49085000)
- 8: Seal (Spare part-nr. 48360000)
- 9: Socket spanner (Spare part-nr. 49059000)*
- 11: GROHE TurboStat cartridge 3/4" (Spare part-nr. 49003000)*
- 12: Universal extension set single-lever mixers, 25 mm (Spare part-nr. 14048000)*

* Optional accessories