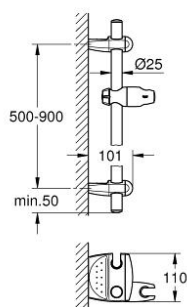


28 398 ZB0 MOVARIO SHOWER RAIL 900 MM

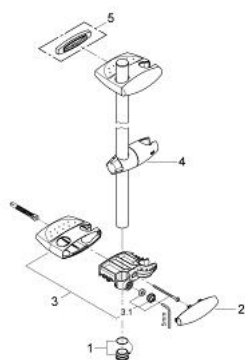


PRODUCT DESCRIPTION

- Colour: antique bronze
- wall mounted
- adjustable distance between wall shower holders for adaption to existing drillings
- glide element with swivel holder
- wall brackets with trays and integrated shower holder
- GROHE FastFixation Plus (adjustable distance between wall shower holders for adaption to existing drillings)
- GROHE Long-Life finish
- shower rail, 600 mm



28 398 ZB0 MOVARIO SHOWER RAIL 900 MM



SPARE PARTS, February 2005 – now

- 1: Cover cap (Spare part-nr. 45922ZB0)
- 2: Cover cap (Spare part-nr. 11482ZB0)
- 3: Bracket (Spare part-nr. 45923ZB0)
- 3.1: Fixing set (Spare part-nr. 45924000)
- 4: Glide element (Spare part-nr. 12353ZB0)
- 5: Compensation disc (Spare part-nr. 28407000)*

* Optional accessories