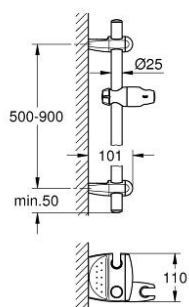


28 398 AV0 MOVARIO SHOWER RAIL, 900 MM

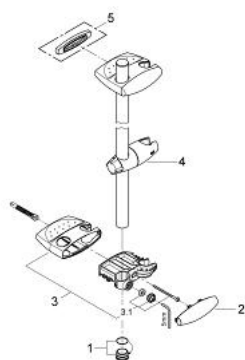


PRODUCT DESCRIPTION

- Colour: silk metal
- wall mounted
- adjustable distance between wall shower holders for adaption to existing drillings
- glide element with swivel holder
- wall brackets with trays and integrated shower holder
- GROHE FastFixation Plus (adjustable distance between wall shower holders for adaption to existing drillings)
- GROHE Long-Life finish
- shower rail, 600 mm



28 398 AV0 MOVARIO SHOWER RAIL, 900 MM



SPARE PARTS, January 2002 – now

1: Cover cap (Spare part-nr. 45922AV0)

2: Cover plate (Spare part-nr. 11482AV0)

3: Bracket (Spare part-nr. 45923AV0)

3.1: Fixing set (Spare part-nr. 45924000)

4: Glide element (Spare part-nr. 12353AV0)

5: Compensation disc (Spare part-nr. 28407000)*

* Optional accessories