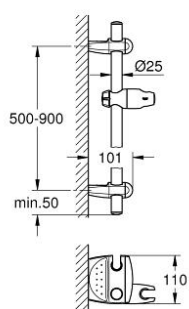


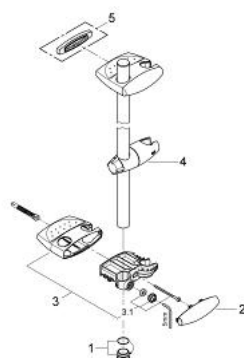
28 398 000 **MOVARIO SHOWER RAIL 900 MM**

PRODUCT DESCRIPTION

- Colour: chrome
- wall mounted
- adjustable distance between wall shower holders for adaption to existing drillings
- glide element with swivel holder
- wall brackets with trays and integrated shower holder
- GROHE FastFixation Plus (adjustable distance between wall shower holders for adaption to existing drillings)
- GROHE Long-Life finish
- shower rail, 600 mm



28 398 000 **MOVARIO SHOWER RAIL 900 MM**



SPARE PARTS, January 2002 – now

1: Cover cap (Spare part-nr. 45922000)

2: Cover cap (Spare part-nr. 11482000)

3: Bracket (Spare part-nr. 45923000)

3.1: Fixing set (Spare part-nr. 45924000)

4: Glide element (Spare part-nr. 12353000)

5: Compensation disc (Spare part-nr. 28407000)*

* Optional accessories