

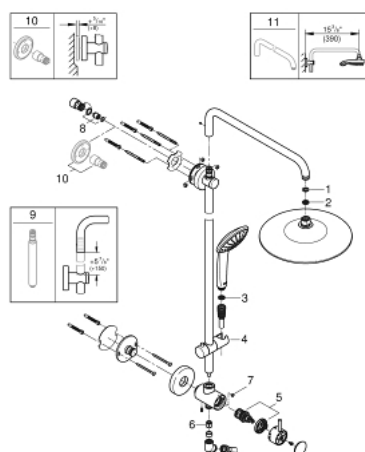
27 867 EN1 **RETROFIT SYSTEM 260 SHOWER SYSTEM WITH DIVERTER FOR WALL MOUNTING**



PRODUCT DESCRIPTION

- Colour: brushed nickel
- consisting of:
 - horizontal swivable 450 mm shower arm
 - built-in diverter with single or duo function and optional eco setting
 - allows change between:
 - head shower Euphoria 260 (26 457)
 - 3 spray patterns:
 - Rain, SmartRain, Jet
 - with ball joint
 - rotation angle $\pm 15^\circ$
 - hand shower Euphoria Mono (27 493)
 - spray pattern: Rain
 - adjustable in height with gliding element
 - distance between diverter and upper bracket: 653 mm
 - Rotaflex Metal Long-Life TwistStop shower hose 1500 mm (28 417)
 - angle adapter to prevent hose interfering with shower valve
 - GROHE Water Saving 9.5 l/min flow limiter
 - GROHE DreamSpray perfect spray pattern
 - GROHE Long-Life finish
 - SpeedClean anti-limescale system
 - Inner WaterGuide for a longer life
 - TwistStop to prevent hose from twisting
 - suitable for instantaneous heaters from 18 kW/h
 - min. recommended pressure 1.0 bar
 - system includes 2 back flow preventers
 - optional compensation disc (26 030) available for uneven wall installation
 - optional height extension (26 464) available for raising the shower head

27 867 EN1 RETROFIT SYSTEM 260 SHOWER SYSTEM WITH DIVERTER FOR WALL MOUNTING



SPARE PARTS, October 2016 – now

- 1: Fibre seal Ø 18,5 x Ø 12 x 2 (Spare part-nr. 0138900M)
- 2: Dirt strainer (Spare part-nr. 48007000)
- 3: Dirt strainer (Spare part-nr. 0700200M)
- 4: Glide element (Spare part-nr. 12140EN0)
- 5: Diverter (Spare part-nr. 48058000)
- 6: Non-return valve (Spare part-nr. 08565000)
- 7: Flow limiter (Spare part-nr. 48160000)
- 8: non-return valves (Spare part-nr. 48183000)
- 9: Retrofit 6" height extension (Spare part-nr. 26464EN0)*
- 10: Compensation disc (Spare part-nr. 26030000)*

* Optional accessories