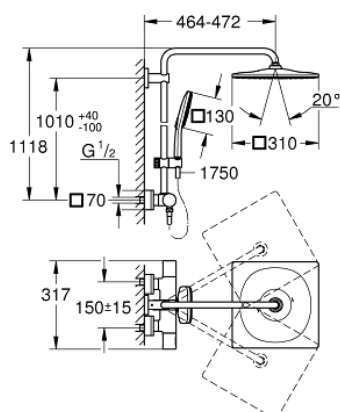


## A modern, chrome-finished shower system. It features a large square overhead rain showerhead mounted on a curved arm. A vertical bar with a sliding mechanism holds a handheld showerhead. Below this, a separate handheld showerhead is connected to the main system by a long, flexible hose, which is shown in a looped position. The entire fixture is mounted on a wall plate.



- Colour: chrome
- consisting of:
  - horizontal swivable 450 mm shower arm
  - exposed thermostat with Aquadimmer function
  - allows change between:
    - head shower Rainshower Mono 310 Cube
    - maximum flow rate (at 3 bar): 9.5 l/min
  - with ball joint
  - rotation angle  $\pm 15^\circ$
- hand shower Rainshower SmartActive 130 Cube
  - maximum flow rate (at 3 bar): 8.5 l/min
  - adjustable in height with gliding element
  - including performance grip
- Silverflex shower hose 1750 mm
- GROHE TurboStat compact cartridge with wax thermoelement
- GROHE Water Saving - Less water, perfect flow
- GROHE SafeStop safety button at 38°C
- GROHE SafeStop Plus optional temperature limiter at 43°C included
- GROHE CoolTouch no risk of scalding
- GROHE DreamSpray perfect spray pattern
- GROHE SmartTip showering spray selection via push of a ring
- GROHE Long-Life finish
- GROHE FastFixation upper bracket adjustable
- SpeedClean anti-limescale system
- suitable for instantaneous heaters from 18 kW/h
- minimum flow rate 7 l/min

## 26 652 000 RAINSHOWER SMARTACTIVE 310 SHOWER SYSTEM WITH THERMOSTAT FOR WALL MOUNTING



### SPARE PARTS, August 2018 – March 2021

- 1: Aquadimmer handle (Spare part-nr. 47804000)
- 2: Stop (Spare part-nr. 47723000)
- 3: Aquadimmer (Spare part-nr. 47364000)
- 4: Water flow (Spare part-nr. 47887000)
- 5: Temperature scale handle (Spare part-nr. 47811000)
- 6: Fitting ring (Spare part-nr. 47743000)
- 7: Thermostatic compact cartridge 1/2" (Spare part-nr. 47439000)
- 8: Non-return valve (Spare part-nr. 47189000)
- 8.1: Dirt strainer (Spare part-nr. 0726400M)
- 8.2: Non-return valve (Spare part-nr. 08565000)
- 8.3: O-ring  $\varnothing 17 \times \varnothing 2$  (Spare part-nr. 0305500M)
- 9: S-union (Spare part-nr. 47824000)
- 10: Non-return valve (Spare part-nr. 08565000)
- 11: Glide element (Spare part-nr. 48424000)
- 12: Dirt strainer (Spare part-nr. 0700200M)
- 13: Fibre seal  $\varnothing 18,5 \times \varnothing 12 \times 2$  (Spare part-nr. 0138900M)
- 14: Dirt strainer (Spare part-nr. 48007000)
- 15: Compensation disc (Spare part-nr. 27617000)\*
- 16: Socket spanner (Spare part-nr. 19332000)\*
- 17: GROHE TurboStat cartridge 1/2" (Spare part-nr. 47175000)\*
- 18: Special spanner (Spare part-nr. 19377000)\*
- 19: Shower system pipe for retrofitting (Spare part-nr. 48053000)\*
- 20: Shower system pipe for retrofitting (Spare part-nr. 48054000)\*
- 21: Shower arm for shower systems (Spare part-nr. 14047000)\*

\* Optional accessories