

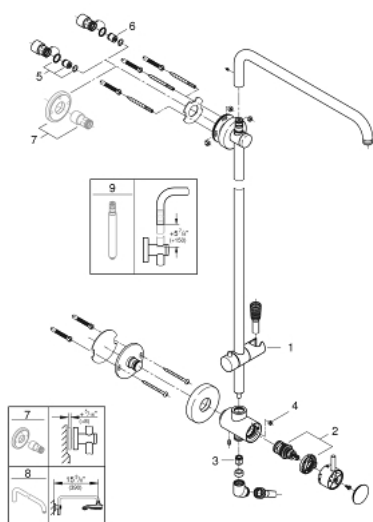
26 486 EN0 **RETROFIT SYSTEM SHOWER SYSTEM WITH DIVERTER FOR WALL MOUNTING**



PRODUCT DESCRIPTION

- Colour: brushed nickel
- consisting of:
 - horizontal swivable 450 mm shower arm
 - built-in diverter allows change between:
 - 6 diverter functions (2 discrete functions (non shared) + one shared function in both standard and Eco flow)
 - head shower and hand shower (not included)
- gliding element
- distance between diverter and upper bracket 457 mm
- Rotaflex Metal Long-Life TwistStop shower hose 1500 mm (28 417)
- angle adapter to prevent hose interfering with shower valve
- optional GROHE Water Saving 6.6 l/min flow limiter included
- GROHE Long-Life finish
- Inner WaterGuide for a longer life
- TwistStop to prevent hose from twisting
- suitable for instantaneous heaters from 18 kW/h
- min. recommended pressure 1.0 bar
- system includes 2 back flow preventers
- optional compensation disc (26 030) available for uneven wall installation
- optional height extension (26 464) available for raising the shower head
- CALGreen compliant

26 486 EN0 RETROFIT SYSTEM SHOWER SYSTEM WITH DIVERTER FOR WALL MOUNTING



SPARE PARTS, November 2016 – now

- 1: Glide element (Spare part-nr. 12140EN0)
- 2: Diverter (Spare part-nr. 48058000)
- 4: Flow limiter (Spare part-nr. 48160000)
- 5: Non-return valve (Spare part-nr. 48184000)
- 6: Non-return valve (Spare part-nr. 08565000)
- 7: Compensation disc (Spare part-nr. 26030000)*
- 8: Shower arm for shower systems (Spare part-nr. 14047000)*

* Optional accessories