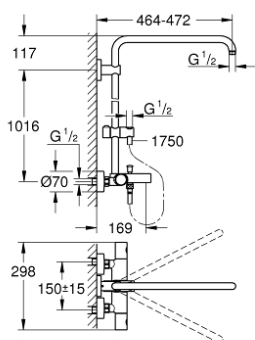


26 243 000 EUPHORIA SYSTEM SHOWER SYSTEM WITH BATH THERMOSTAT FOR WALL MOUNTING

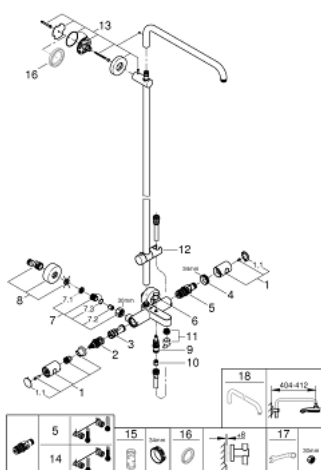


PRODUCT DESCRIPTION

- Colour: chrome
- with short shower rail for installation in showers
- consisting of:
 - horizontal swivable 450 mm shower arm
 - exposed thermostat with Aquadimmer function
 - separate diverter for hand shower
 - gliding element
- Silverflex shower hose 1750 mm (28 388)
- distance between thermostat and upper bracket: 1016 mm
- GROHE TurboStat compact cartridge with wax thermoelement
- GROHE SafeStop safety button at 38°C
- GROHE SafeStop Plus optional temperature limiter at 43°C included
- GROHE Long-Life finish
- Inner WaterGuide for a longer life
- TwistStop to prevent hose from twisting
- suitable for instantaneous heaters from 18 kW/h
- minimum flow rate 7 l/min



26 243 000 EUPHORIA SYSTEM SHOWER SYSTEM WITH BATH THERMOSTAT FOR WALL MOUNTING



SPARE PARTS, July 2017 – March 2021

- 1: Metal handle 1/2" (Spare part-nr. 47984000)
 - 1.1: Cover cap (Spare part-nr. 6458500M)
 - 2: Aquadimmer (Spare part-nr. 47364000)
 - 3: Water flow (Spare part-nr. 47887000)
 - 4: Fitting ring (Spare part-nr. 47743000)
 - 5: Thermostatic compact cartridge 1/2" (Spare part-nr. 47439000)
 - 6: Diverter knob (Spare part-nr. 65648000)
 - 7: Non-return valve (Spare part-nr. 47189000)
 - 7.1: Dirt strainer (Spare part-nr. 0726400M)
 - 7.2: Non-return valve (Spare part-nr. 08565000)
 - 7.3: O-ring $\varnothing 17 \times \varnothing 2$ (Spare part-nr. 0305500M)
 - 8: S-union (Spare part-nr. 12662000)
 - 9: Diverter (Spare part-nr. 65655000)
 - 10: Non-return valve (Spare part-nr. 08565000)
 - 11: Mousseur (Spare part-nr. 13926000)
 - 12: Glide element (Spare part-nr. 12140000)
 - 13: Shower rail holder (Spare part-nr. 48279000)
 - 14: GROHE TurboStat cartridge 1/2" (Spare part-nr. 47175000)*
 - 15: Socket spanner (Spare part-nr. 19332000)*
 - 16: Compensation disc (Spare part-nr. 27180000)*
 - 17: Special spanner (Spare part-nr. 19377000)*
 - 18: Shower arm for shower systems (Spare part-nr. 14047000)*
- * Optional accessories