

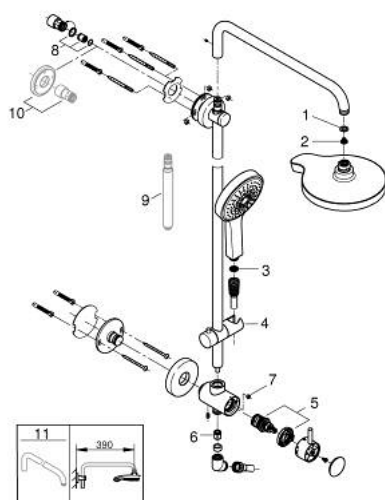
## 26 127 000 **RETROFIT 190 SHOWER SYSTEM WITH DIVERTER FOR WALL MOUNTING**



### PRODUCT DESCRIPTION

- Colour: chrome
- consisting of:
  - horizontal swivable 450 mm shower arm
  - built-in diverter allows change between:
    - head shower 4+ sprays (27 765)
    - GROHE Rain O², Rain, Bokoma Spray, Jet
  - with ball joint
  - rotation angle  $\pm 15^\circ$
  - hand shower 4+ sprays (27 664)
  - GROHE Rain O², Rain, Bokoma Spray, Jet
- adjustable in height with gliding element
- metal shower hose 1500 mm (28 417)
- angle adapter
- GROHE Water Saving 9.5 l/min flow limiter
- GROHE Water Saving - Less water, perfect flow
- GROHE DreamSpray perfect spray pattern
- GROHE Long-Life finish
- SpeedClean anti-limescale system
- Inner WaterGuide for a longer life
- rotation cone for TwistStop-function
- suitable for instantaneous heaters from 18 kW/h

## 26 127 000 RETROFIT 190 SHOWER SYSTEM WITH DIVERTER FOR WALL MOUNTING



### SPARE PARTS, April 2017 – now

- 1: Fibre seal Ø 18,5 x Ø 12 x 2 (Spare part-nr. 0138900M)
  - 2: Dirt strainer (Spare part-nr. 0676800M)
  - 3: Dirt strainer (Spare part-nr. 0700200M)
  - 4: Glide element (Spare part-nr. 12140000)
  - 5: Diverter (Spare part-nr. 48058000)
  - 6: Non-return valve (Spare part-nr. 08565000)
  - 7: Flow limiter (Spare part-nr. 48160000)
  - 8: non-return valves (Spare part-nr. 48183000)
  - 9: Retrofit 6" height extension (Spare part-nr. 26464000)\*
  - 10: Compensation disc (Spare part-nr. 26030000)\*
  - 11: Shower arm for shower systems (Spare part-nr. 14047000)\*
- \* Optional accessories