

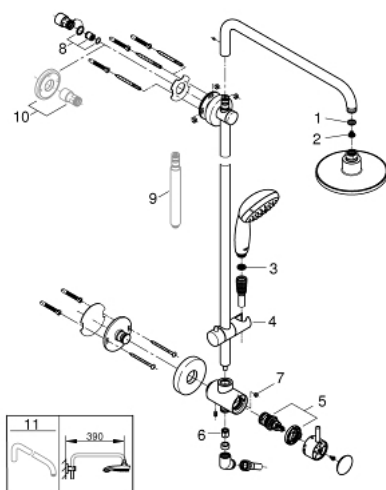
26 123 000 **RETROFIT 160 SHOWER SYSTEM WITH DIVERTER FOR WALL MOUNTING**



PRODUCT DESCRIPTION

- Colour: chrome
- consisting of:
 - horizontal swivable 450 mm shower arm
 - built-in diverter allows change between:
 - head shower 1 spray (27 807)
 - Rain
 - with ball joint
 - rotation angle $\pm 15^\circ$
- hand shower Tempesta 6.6 l/min (26 047)
- GROHE Rain O², Rain
- adjustable in height with gliding element
- metal shower hose 1500 mm (28 417)
- angle adapter
- GROHE Water Saving 9.5 l/min flow limiter
- GROHE Water Saving - Less water, perfect flow
- GROHE DreamSpray perfect spray pattern
- GROHE Long-Life finish
- SpeedClean anti-limescale system
- Inner WaterGuide for a longer life
- rotation cone for TwistStop-function
- suitable for instantaneous heaters from 18 kW/h

26 123 000 RETROFIT 160 SHOWER SYSTEM WITH DIVERTER FOR WALL MOUNTING



SPARE PARTS, April 2017 – now

- 1: Fibre seal Ø 18,5 x Ø 12 x 2 (Spare part-nr. 0138900M)
- 2: Dirt strainer (Spare part-nr. 0676800M)
- 3: Dirt strainer (Spare part-nr. 0700200M)
- 4: Glide element (Spare part-nr. 12140000)
- 5: Diverter (Spare part-nr. 48058000)
- 6: Non-return valve (Spare part-nr. 08565000)
- 7: Flow limiter (Spare part-nr. 48160000)
- 8: non-return valves (Spare part-nr. 48183000)
- 9: Shower system with thermostat for wall mounting (Spare part-nr. 26494000)
- *
- 10: Compensation disc (Spare part-nr. 26030000)*
- 11: Shower arm for shower systems (Spare part-nr. 14047000)*
- * Optional accessories