

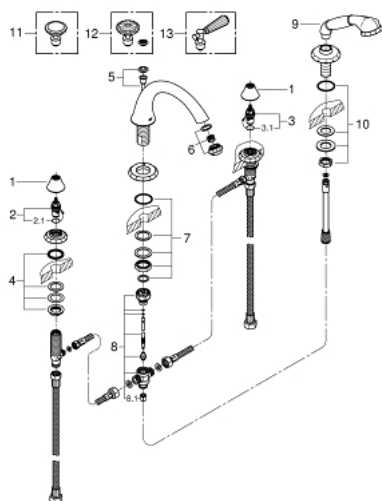
25 073 000 **KENSINGTON FOUR-HOLE BATH COMBINATION**



PRODUCT DESCRIPTION

- Colour: chrome
- without handles
- consisting of:
- diverter bath spout with mousseur
- side valves
- ceramic headparts 1/2", 90°
- hand shower
- shower hose
- shower hose 2000 mm
- 2000 mm
- pressure-proof flexible connection hoses between spout and side valves
- GROHE Long-Life finish
- round handles 18 086 000 & 18 086 EN0 (sold separately)
- Swarovski crystal handles 18 086 VP0 (sold separately)
- lever handles 18 087 000 & 18 087 EN0 (sold separately)

25 073 000 KENSINGTON FOUR-HOLE BATH COMBINATION



SPARE PARTS, February 2017 – now

- 1: Cap (Spare part-nr. 45907000)
- 2: Ceramic headpart 1/2" (Spare part-nr. 45882000)
- 2.1: O-ring Ø 18.2 x Ø 1.7 (Spare part-nr. 0392400M)
- 3: Ceramic headpart 1/2" (Spare part-nr. 45883000)
- 3.1: O-ring Ø 18.2 x Ø 1.7 (Spare part-nr. 0392400M)
- 4: Counter screws M28 x 1.5 (Spare part-nr. 45025000)
- 5: Pop-up rod (Spare part-nr. 45875000)
- 6: Sistra (Spare part-nr. 13991000)
- 7: Shank mounting kit (Spare part-nr. 46078000)
- 8: Diverter (Spare part-nr. 45470000)
- 8.1: Non-return valve (Spare part-nr. 08565000)
- 9: handshower (Spare part-nr. 45912000)
- 10: Shank mounting kit (Spare part-nr. 07660000)
- 11: Round handle (Spare part-nr. 18086000)*
- 12: Round handle (Spare part-nr. 18086VP0)*
- 13: Lever handle (Spare part-nr. 18087000)*

* Optional accessories