

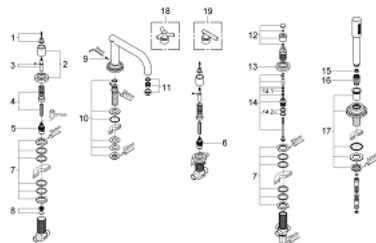
25 049 EN0 **ATRIO FIVE-HOLE BATH COMBINATION**



PRODUCT DESCRIPTION

- Colour: brushed nickel
- GROHE Long-Life finish
- GROHE SilkMove ceramic cartridge
- 2 valves 3/4"
- bath inlet with mousseur
- Sena hand shower (28 034)
- metal shower hose
- without handles
- Trio spoke handles 18 026 000 & 18 026 EN0 (sold separately)
- Atrio lever handles 18 027 000 & 18 027 EN0 (sold separately)

25 049 EN0 ATRIO FIVE-HOLE BATH COMBINATION



SPARE PARTS, March 2005 – now

- 1: Replacement handle connection kit (Spare part-nr. 45605000)
- 2: Escutcheon (Spare part-nr. 11222EN0)
- 3: Extension for spindle (Spare part-nr. 45607000)
- 4: Extension set, 80 mm (Spare part-nr. 45202000)
- 5: Ceramic headpart 3/4" (Spare part-nr. 45888000)
- 6: Ceramic headpart 3/4" (Spare part-nr. 45887000)
- 7: Replacement kit for shank fastening (Spare part-nr. 45444000)
- 8: Valve seat 3/4" (Spare part-nr. 45345000)
- 9: Spout connection set (Spare part-nr. 47670000)
- 10: Replacement kit for shank fastening (Spare part-nr. 45163000)
- 11: Sistra (Spare part-nr. 13907EN0)
- 12: Diverter knob (Spare part-nr. 07576EN0)
- 13: Escutcheon (Spare part-nr. 11223EN0)
- 14: Diverter (Spare part-nr. 45443000)
- 14.1: Sealing washer Ø 6 x Ø 2 (Spare part-nr. 0128300M)
- 14.2: Sealing washer (Spare part-nr. 0120500M)
- 15: Dirt strainer (Spare part-nr. 0700200M)
- 16: Cone nut (Spare part-nr. 08864EN0)
- 17: Spray holder (Spare part-nr. 47668EN0)
- 18: Handle Atrio Ypsilon (Spare part-nr. 18033EN0)*
- 19: Handle Jota (Spare part-nr. 18034EN0)*

* Optional accessories