

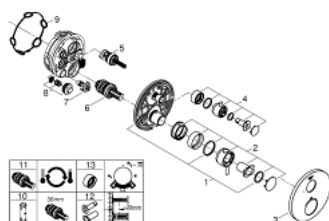
## 24 150 EN3 **ATRIO THERMOSTATIC MIXER FOR 1 OUTLET WITH SHUT OFF VALVE**



### PRODUCT DESCRIPTION

- Colour: brushed nickel
- set for final installation for
- GROHE Rapido SmartBox (35 601)
- GROHE TurboStat compact cartridge with wax thermoelement
- GROHE Long-Life finish
- GROHE FastFixation escutcheon with covered shaft sealing and covered fixing
- metal escutcheon, retroactively 6° adjustable
- GROHE SafeStop safety button at 38°C
- GROHE SafeStop Plus temperature limiter at 115° F/46° C
- ceramic stop valve, 120°
- metal handles
- without roughing-in set

## 24 150 EN3 ATRIO THERMOSTATIC MIXER FOR 1 OUTLET WITH SHUT OFF VALVE



### SPARE PARTS, January 2018 – now

- 1: Mounting plate (Spare part-nr. 49080000)
  - 2: Temperature control handle (Spare part-nr. 49089EN0)
  - 3: Escutcheon (Spare part-nr. 49096EN0)
  - 4: Shut-off handle Aquadimmer (Spare part-nr. 49165EN0)
  - 5: Aquadimmer (Spare part-nr. 49084000)
  - 6: Thermostatic compact cartridge 3/4" (Spare part-nr. 49028000)
  - 7: Service stops (Spare part-nr. 1405300M)
  - 8: Non-return valve (Spare part-nr. 49085000)
  - 9: Seal (Spare part-nr. 48360000)
  - 10: Socket spanner (Spare part-nr. 49059000)\*
  - 11: GROHE TurboStat cartridge 3/4" (Spare part-nr. 49003000)\*
  - 12: Universal extension set 2-handle thermostats, 25 mm (Spare part-nr. 14058000)\*
  - 13: Aquadimmer stop ring for shared function (Spare part-nr. 14060000)\*
- \* Optional accessories