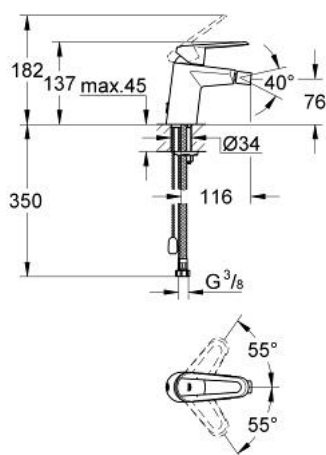


## 23 219 000 **WAVE COSMOPOLITAN SINGLE-LEVER BIDET MIXER 1/2"**

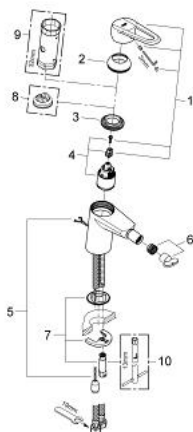


### PRODUCT DESCRIPTION

- Colour: chrome
- single hole installation
- metal lever
- GROHE SilkMove 35 mm ceramic cartridge
- GROHE Long-Life finish
- GROHE Water Saving ball-joint mousseur 5.7 l/min
- adjustable flow rate limiter
- adjustable minimum flow rate approx. 2.5 l/min
- retractable chain
- flexible connection hoses
- GROHE FastFixation installation system with centering support
- optional temperature limiter ref. no. 46 375
- noise classification I in accordance with DIN 4109



## 23 219 000 **WAVE COSMOPOLITAN SINGLE-LEVER BIDET MIXER 1/2"**



### **SPARE PARTS**, February 2011 – now

- 1: Lever (Spare part-nr. 46799000)
- 2: Cap (Spare part-nr. 46492000)
- 3: Screw coupling (Spare part-nr. 46460000)
- 4: Cartridge (Spare part-nr. 46374000)
- 5: Chain (Spare part-nr. 06815000)
- 6: Mousseur (Spare part-nr. 13998000)
- 7: Shank mounting kit (Spare part-nr. 46671000)
- 8: Temperature limiter (Spare part-nr. 46375000)\*
- 9: Socket spanner (Spare part-nr. 19332000)\*
- 10: Mounting wrench (Spare part-nr. 19017000)\*

\* Optional accessories