

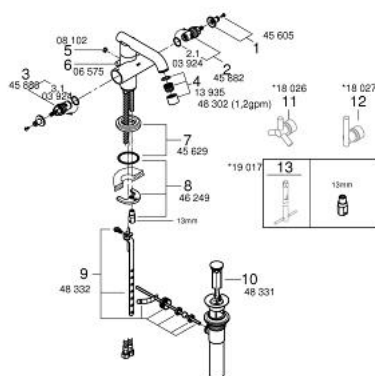
21 031 00A **ATRIO ONE-HOLE BASIN MIXER, 1/2"**  
**M-SIZE**



**PRODUCT DESCRIPTION**

- Colour: chrome
- GROHE Long-Life finish
- GROHE SilkMove ceramic cartridge
- GROHE WaterCare
- swivel tubular spout with mousseur and stop limiter
- ceramic headparts 1/2", 90°
- pop-up waste set 1 1/4"
- low spout
- flexible connection hoses
- rapid installation system
- without handles
- Trio spoke handles 18 026 000 & 18 026 EN0 (sold separately)
- Atrio lever handles 18 027 000 & 18 027 EN0 (sold separately)
- max. flow rate 4.5 l/min (1.2 gpm)
- less handles – order (18 026) or (18 027) (sold separately)

## 21 031 00A ATRIO ONE-HOLE BASIN MIXER, 1/2" M-SIZE



### SPARE PARTS, June 2015 – now

- 1: Replacement handle connection kit (Spare part-nr. 45605000)
- 2: Ceramic headpart 1/2" (Spare part-nr. 45882000)
- 2.1: O-ring Ø 18.2 x Ø 1.7 (Spare part-nr. 0392400M)
- 3: Ceramic headpart 1/2" (Spare part-nr. 45883000)
- 3.1: O-ring Ø 18.2 x Ø 1.7 (Spare part-nr. 0392400M)
- 4: Flow control (Spare part-nr. 48302000)
- 5: Cover cap (Spare part-nr. 0810200M)
- 6: Pop-up rod (Spare part-nr. 06575000)
- 7: Escutcheon (Spare part-nr. 45629000)
- 8: Shank mounting kit (Spare part-nr. 46249000)
- 9: Ball rod (Spare part-nr. 48332000)
- 10: Plug (Spare part-nr. 48331000)
- 11: Trio spoke handles (Spare part-nr. 18026000)\*
- 12: Handle Jota (Spare part-nr. 18027000)\*
- 13: Mounting wrench (Spare part-nr. 19017000)\*

\* Optional accessories