

Pure Freude
an Wasser

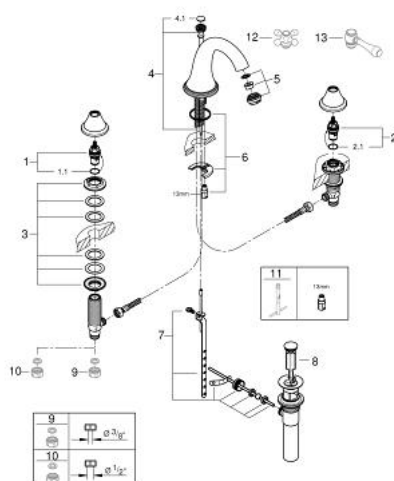


20 801 BEA **GENEVA THREE-HOLE BASIN MIXER 1/2"**

PRODUCT DESCRIPTION

- Colour: polished nickel
- without handles
- non swivel high spout with mousseur
- ceramic headparts 1/2", 90°
- pop-up waste set 1 1/4"
- union nut with 10.5 mm drilling
- pressure-proof flexible connection hoses between spout and side valves
- for Geneva cross and lever handles 18 733 / 18 734
- GROHE Long-Life finish
- max. flow rate 4.5 l/min (1.2 gpm)

20 801 BEA **GENEVA THREE-HOLE BASIN MIXER 1/2"**



SPARE PARTS, July 2016 – now

- 1: Ceramic headpart 1/2" (Spare part-nr. 45882000)
- 1.1: O-ring Ø 18.2 x Ø 1.7 (Spare part-nr. 0392400M)
- 2: Ceramic headpart 1/2" (Spare part-nr. 45883000)
- 2.1: O-ring Ø 18.2 x Ø 1.7 (Spare part-nr. 0392400M)
- 3: Counter screws M28 x 1.5 (Spare part-nr. 45025000)
- 4: Pop-up rod (Spare part-nr. 45791BE0)
- 4.1: Marking piece (Spare part-nr. 45763L00)
- 5: Laminar flow straightener (Spare part-nr. 13931BE0)
- 6: Shank mounting kit (Spare part-nr. 46249000)
- 7: Ball rod (Spare part-nr. 48332000)
- 9: Coupling nut 1/2" (Spare part-nr. 1290100M)*
- 10: Coupling nut 1/2" x 14.5 mm (Spare part-nr. 1290200M)*
- 11: Mounting wrench (Spare part-nr. 19017000)*
- 12: Cross handle (Spare part-nr. 18733BE0)*
- 13: Lever handle (Spare part-nr. 18734BE0)*

* Optional accessories