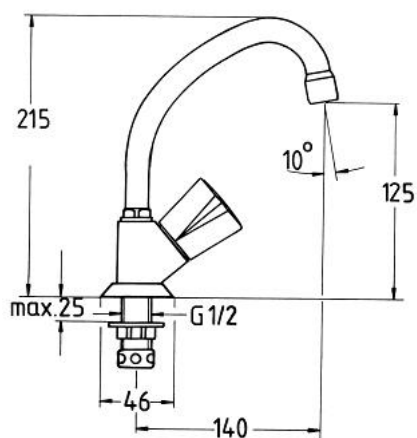


20 393 000 **COSTA PILLAR TAP 1/2"**

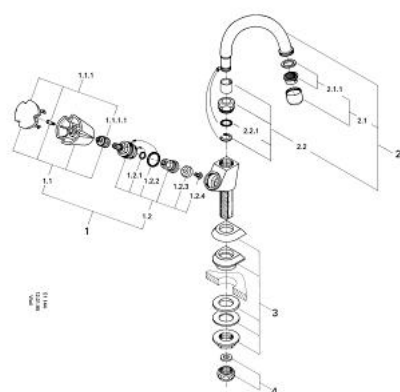


PRODUCT DESCRIPTION

- Colour: chrome
- metal handle
- GROHE Long-Life headpart
- heat insulated
- screwable
- marking: blue
- swivel tubular spout with mousseur
- union nut 1/2" with 10.5 mm drilling
- GROHE Long-Life finish



20 393 000 COSTA PILLAR TAP 1/2"



20 393

SPARE PARTS, January 1988 – now

- 1: Headpart 1/2" (Spare part-nr. 11090000)
- 1.1: Metal handle 1/2" (Spare part-nr. 45258000)
- 1.1.1: Snap insert (Spare part-nr. 0538600M)
- 1.2: Headpart 1/2" (Spare part-nr. 07146000)
- 1.2.1: Sealing washer Ø 6 x Ø 2 (Spare part-nr. 0128300M)
- 1.2.2: O-ring Ø 18.2 x Ø 1.7 (Spare part-nr. 0392400M)
- 1.2.3: Seal (Spare part-nr. 0529100M)
- 2: Tubular spout (Spare part-nr. 13072000)
- 2.1: Mousseur (Spare part-nr. 13928000)
- 2.2: O-ring Ø 12 x Ø 2 (Spare part-nr. 0128000M)
- 3: Shank fastening assembly 1/2" (Spare part-nr. 45000000)
- 4: Coupling nut 1/2" (Spare part-nr. 1290100M)
- 4.1: Fibre seal Ø 18,5 x Ø 12 x 2 (Spare part-nr. 0138900M)