

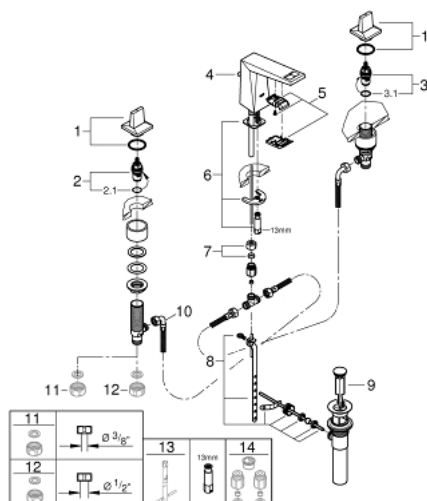
20 343 00A **ALLURE BRILLIANT THREE-HOLE BASIN MIXER** **S-SIZE**



PRODUCT DESCRIPTION

- Colour: chrome
- ceramic headparts 1/2", 90°
- GROHE Long-Life finish
- GROHE Water Saving - Less water, perfect flow
- low spout with integrated mousseur
- pressure-proof flexible connection hoses between spout and side valves
- pop-up waste set 1 1/4"
- max. flow rate 1.2 gpm at 60 psi (4.5 l/min)

20 343 00A ALLURE BRILLIANT THREE-HOLE BASIN MIXER S-SIZE



SPARE PARTS, June 2020 – now

- 1: Handle pair (Spare part-nr. 48320000)
- 2: Ceramic headpart 1/2" (Spare part-nr. 45882000)
- 2.1: O-ring Ø 18.2 x Ø 1.7 (Spare part-nr. 0392400M)
- 3: Ceramic headpart 1/2" (Spare part-nr. 45883000)
- 3.1: O-ring Ø 18.2 x Ø 1.7 (Spare part-nr. 0392400M)
- 4: Pop-up rod (Spare part-nr. 46787000)
- 5: Race (Spare part-nr. 46794000)
- 6: Shank mounting kit (Spare part-nr. 46671000)
- 7: Compression union 3/8" (Spare part-nr. 12914000)
- 8: Ball rod (Spare part-nr. 48332000)
- 9: Plug (Spare part-nr. 48331000)
- 10: Flexible connection hose (Spare part-nr. 45704000)
- 11: Coupling nut 1/2" (Spare part-nr. 1290100M)*
- 12: Coupling nut 1/2" x 14.5 mm (Spare part-nr. 1290200M)*
- 13: Mounting wrench (Spare part-nr. 19017000)*
- 14: Water saving set (Spare part-nr. 48189000)*

* Optional accessories