

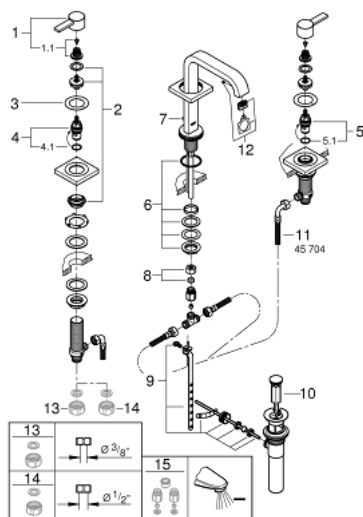
20 191 00A **ALLURE THREE-HOLE BASIN MIXER 1/2"**
M-SIZE



PRODUCT DESCRIPTION

- Colour: chrome
- with lever handles
- separate escutcheons made of metal
- ceramic headparts 1/2", 90°
- GROHE Long-Life finish
- spout with mousseur
- pressure-proof flexible connection hoses between spout and side valves
- pop-up waste set 1 1/4"
- max. flow rate 4.5 l/min (1.2 gpm)

20 191 00A ALLURE THREE-HOLE BASIN MIXER 1/2" M-SIZE



SPARE PARTS, March 2020 – now

- 1: Handle (Spare part-nr. 48043000)
- 1.1: Replacement handle connection kit (Spare part-nr. 45186000)
- 1.1.1: O-ring Ø 18.2 x Ø 1.7 (Spare part-nr. 0392400M)
- 2: Extension for spindle (Spare part-nr. 48045000)
- 3: Sealing washer (Spare part-nr. 48047000)
- 4: Ceramic headpart 1/2" (Spare part-nr. 45882000)
- 4.1: O-ring Ø 18.2 x Ø 1.7 (Spare part-nr. 0392400M)
- 5: Ceramic headpart 1/2" (Spare part-nr. 45883000)
- 5.1: O-ring Ø 18.2 x Ø 1.7 (Spare part-nr. 0392400M)
- 6: Counter screws M28 x 1.5 (Spare part-nr. 45025000)
- 7: Pop-up rod (Spare part-nr. 65196000)
- 8: Compression union 3/8" (Spare part-nr. 12914000)
- 8.1: Seal (Spare part-nr. 45279000)
- 9: Ball rod (Spare part-nr. 48332000)
- 10: Plug (Spare part-nr. 48331000)
- 11: Flexible connection hose (Spare part-nr. 45704000)
- 12: Mousseur (Spare part-nr. 13220000)
- 13: Coupling nut 1/2" (Spare part-nr. 1290100M)*
- 14: Coupling nut 1/2" x 14.5 mm (Spare part-nr. 1290200M)*
- 15: Water saving set (Spare part-nr. 48189000)*

* Optional accessories