

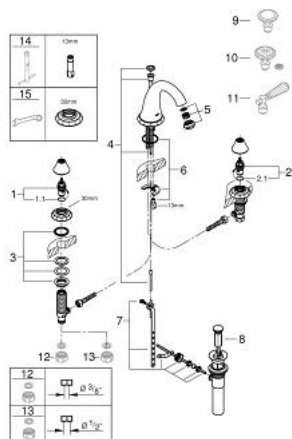
20 124 ENA **KENSINGTON THREE-HOLE BASIN MIXER 1/2"**



PRODUCT DESCRIPTION

- Colour: brushed nickel
- without handles
- mousseur
- side valves
- ceramic headparts 1/2", 90°
- pop-up waste set 1 1/4"
- pressure-proof flexible connection hoses between spout and side valves
- GROHE Long-Life finish
- round handles 18 086 000 & 18 086 EN0 (sold separately)
- Swarovski crystal handles 18 086 VP0 (sold separately)
- lever handles 18 087 000 & 18 087 EN0 (sold separately)
- max. flow rate 4.5 l/min (1.2 gpm)

20 124 ENA **KENSINGTON THREE-HOLE BASIN MIXER 1/2"**



SPARE PARTS, June 2015 – now

- 1: Ceramic headpart 1/2" (Spare part-nr. 45882000)
 - 1.1: O-ring Ø 18.2 x Ø 1.7 (Spare part-nr. 0392400M)
 - 2: Ceramic headpart 1/2" (Spare part-nr. 45883000)
 - 2.1: O-ring Ø 18.2 x Ø 1.7 (Spare part-nr. 0392400M)
 - 3: Counter screws M28 x 1.5 (Spare part-nr. 45025000)
 - 4: Pop-up rod (Spare part-nr. 45875EN0)
 - 5: Sistra (Spare part-nr. 13990EN0)
 - 6: Shank mounting kit (Spare part-nr. 46249000)
 - 7: Ball rod (Spare part-nr. 48332000)
 - 9: Round handle (Spare part-nr. 18086EN0)*
 - 10: Round handle (Spare part-nr. 18086VP0)*
 - 11: Lever handle (Spare part-nr. 18087EN0)*
 - 12: Coupling nut 1/2" (Spare part-nr. 1290100M)*
 - 13: Coupling nut 1/2" x 14.5 mm (Spare part-nr. 1290200M)*
 - 14: Mounting wrench (Spare part-nr. 19017000)*
 - 15: Special spanner (Spare part-nr. 19377000)*
- * Optional accessories